

# T560, T555

MODEL



## Project Developer and Eurotherm Project Studio Product Data



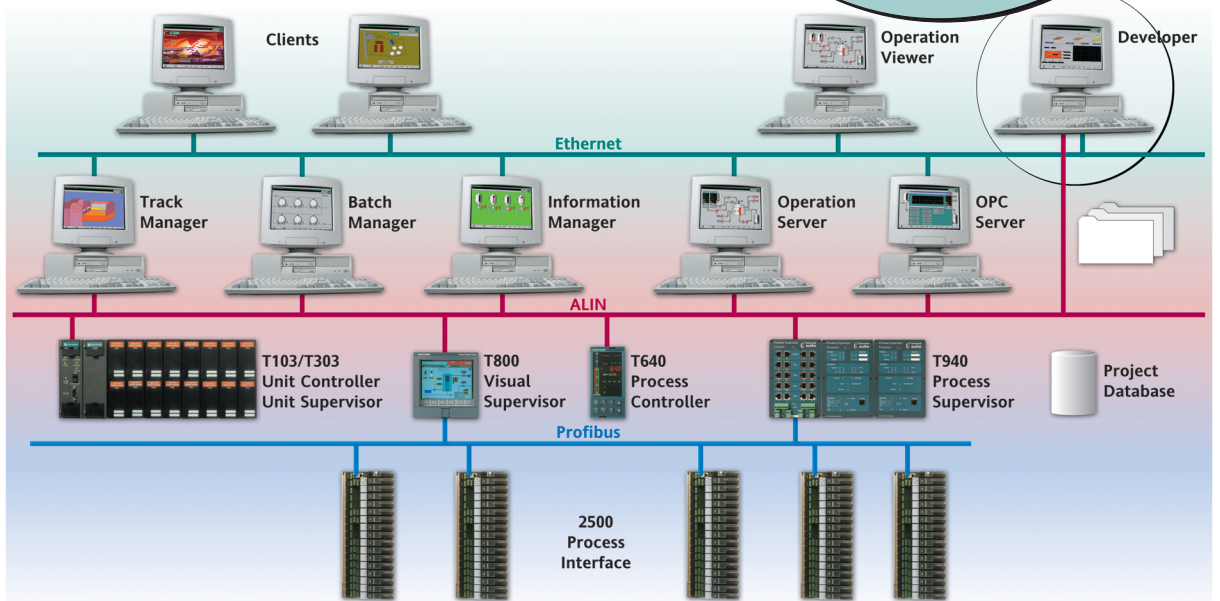
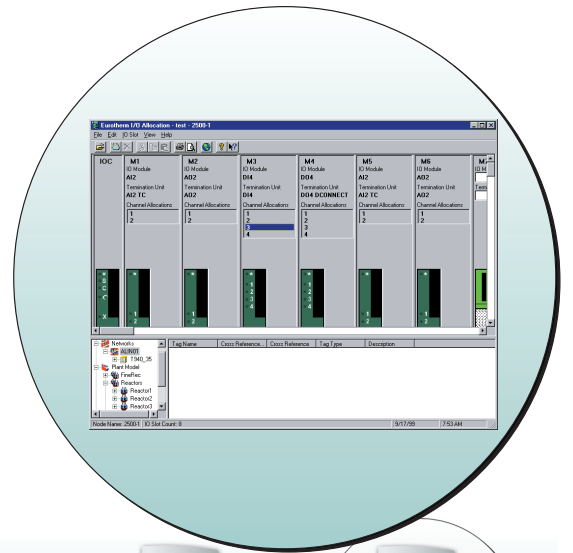
**EUROTHERM**

CONTROLS  
DATA MANAGEMENT  
PROCESS AUTOMATION

- Engineering tools for process automation
- Single point configuration
- Integrated development environment

## PROJECT DEVELOPER AND EURO THERM PROJECT STUDIO

- Project oriented integrated development environment
- Suite of tools designed to configure and commission all Eurotherm products
- Single point of configuration
- Extensive wizards and autobuild features
- Centralised relational database
- On-line help with on-line books
- Modem/network support for remote access
- Automatic application documentation
- Supplied as part of EurothermSuite
- Windows operating systems supported including Windows 2000, NT, ME, 98 and 95



Eurotherm Project Studio is a set of graphical object oriented engineering tool for the configuration and commissioning of all Eurotherm products.

Eurotherm Project Developer provides a project oriented development environment with a centralised relational database allowing for simpler system management and

configuration. It includes Eurotherm Project Studio and extends its integrated functionality through an Integrated Development Environment. Single point for data entry allows autobuild facility to be used to automatically create all of the configuration files needed within the system.

## EUROTHERM SUITE PROJECT DEVELOPER

- Project oriented development environment
- Integrated Development Environment (IDE)
- Designed to configure any system size – from a single node to multi-node, multi-network systems
- Ability to create and maintain multiple projects on a single platform
- Wizards for simplified system configuration
- Auto generation of configuration files
- Substantial reduction in engineering effort
- Object oriented configuration tools
- Import/export of tag lists

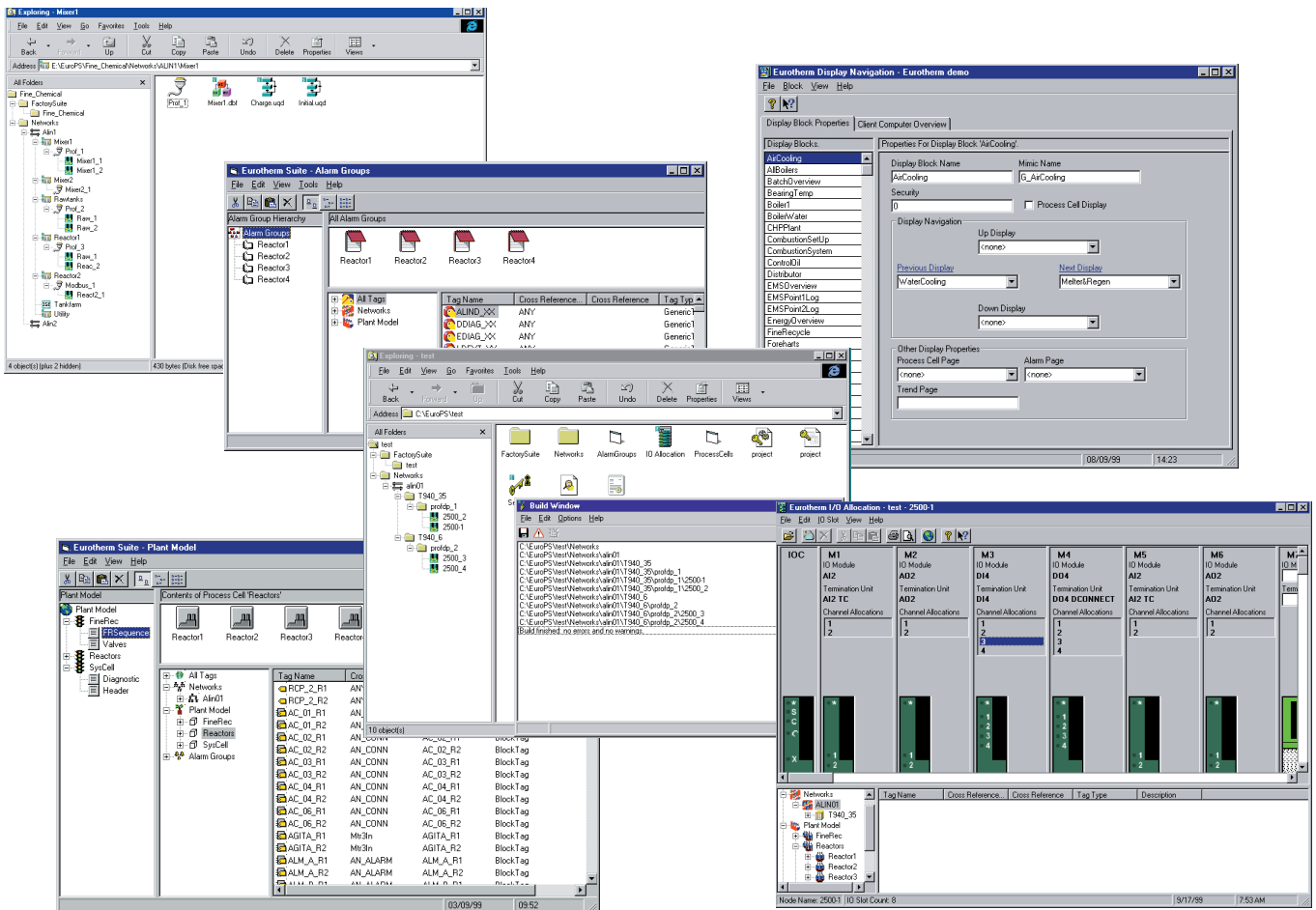
The Project Developer provides a project oriented development environment allowing for simpler system management and configuration through the use of 'wizards'. It offers an Integrated Development Environment (IDE) which gives increased integrated functionality and is designed to reduce project development costs.

The Project Developer can configure a single node to multi-node, multi-network systems. Multiple projects can be created and maintained on a single PC platform.

Use of a project namespace allows any application file type to be included. This allows the management of all elements associated with a project (i.e. user requirement specification, functional design specification, drawings, etc). Various valid operations can be performed on each object in the Project Developer by using either the content menu or the file menu.

The physical plant model, tags, I/O assignment, alarm groups, display and data security can all be defined with Project Developer. Information is entered via a series of user-friendly and intuitive displays and then carried onto the project database based on Microsoft Access™. The Auto-generation facility of Project Developer facilitates the automatic creation of all configuration files from data stored in the project database and any defined special logic (i.e. interlocks, sequencing, etc.).

Import of tag definitions from spreadsheets, text files or other databases prevents data transcription errors and speeds project set-up.



## EUROTHERM PROJECT STUDIO 2000

Contains

- **LINtools 2000**
- **iTools**
- **LINOPC**
- **ENROMBUS**
- **OPC Scope**
- **CONfed**
- **Review**
- **Network Explorer**
- **User Screen Editor**
- **Setpoint Program Editor**

### LINtools 2000

- Common tool set for the ALIN product range
- Powerful online commissioning features
- Automatic documentation
- Graphical configuration
- Extensive library of control modules

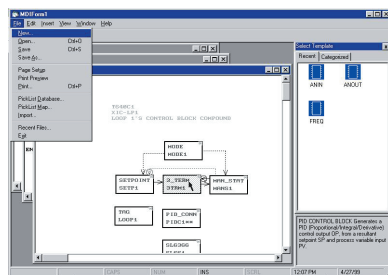
LINtools are a comprehensive set of configuration, test, documentation and commissioning tools for ALIN instruments. LINtools includes graphical configuration for continuous control and sequencing control. The on-line monitoring facility allows users to observe databases and SFCs for commissioning and fault finding purposes.

Documentation and file utilities allow both strategy and graphics to be fully documented and transferred across the network.

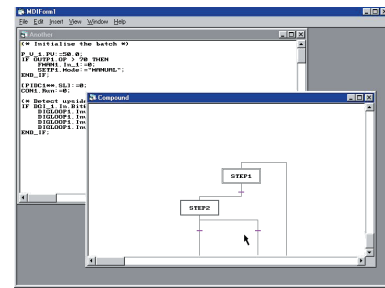
LINtools follows the IEC1131-3 standard.

Continuous strategies are configured graphically using 'block structured' technologies provided by the Eurotherm ALIN Database Editor which supports a comprehensive library of function blocks.

Sequences are configured graphically using Sequential Function Charts (SFCs) following the IEC1131-3 standards. Steps initiate Actions which may be Structured Text statements (ST), or nested SFCs, transitions determine when control passes from one step to another.



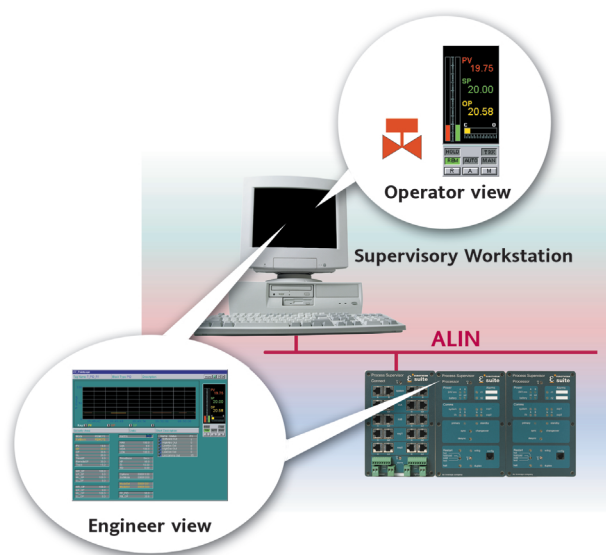
Sequences can be configured as generic or specific. Generic sequences enable users to configure and test the sequence once and then replicate it many times. Generic SFCs are constructed using generic name variables. The powerful sequence configurator allows the creation of a generic sequence from a specific one.



The on-line monitor facility of LINtools enables users to view and interact with control and sequence strategies running in remote ALIN instruments. With the database monitor and the necessary security clearance, remote ALIN instrument databases can be accessed and blocks can be modified on screen. The database monitor allows a combination of blocks from multiple nodes to be observed simultaneously.

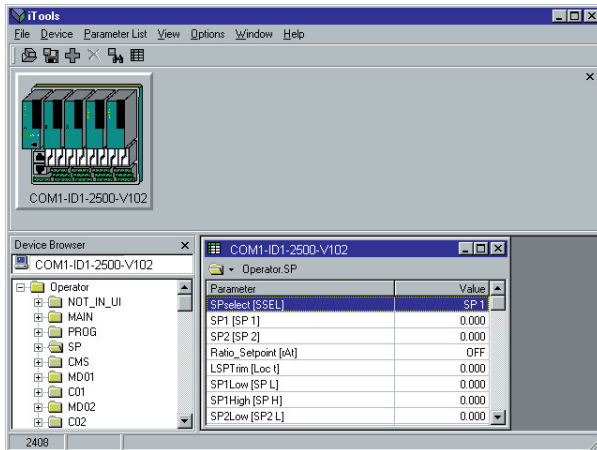
With a sequence monitor and the necessary security clearance, remote sequences can be observed and controlled, active steps can be tracked, transitions can be forced or held, and SFC objects can be inspected.

In addition to its extensive library of function blocks, LINtools offers a comprehensive library of standard control modules which provide a set of building blocks. This enables plant devices and equipment to be represented by dedicated objects in the control system with standard displays at workstation level. This simplifies implementation, improves clarity of documentation and aids operator navigation. The standard control module library includes an extensive range of valves, motors and signal conditioners.



## iTools

- Scanning for connected instruments on request
- All functionality required for both online and offline configuration
- Full parameter list showing
- Cloning of configuration files
- Modem/network support for remote access
- Active X™ component



iTools provides parameterisation and commissioning features for the Process Interface (2500). iTools can scan the network on request and identify any series 2000 equipment connected to the network with a valid MODBUS RTU address. In addition to the controller faceplate, all parameters within the controller are available in separate windows.

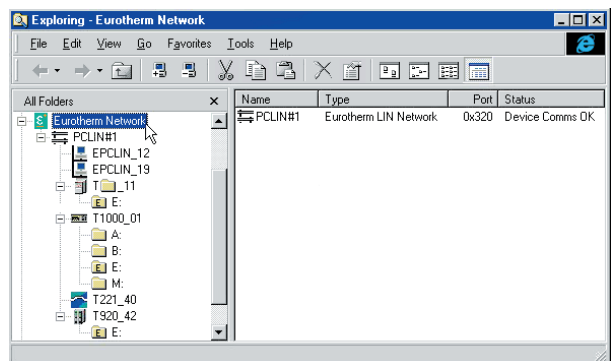
Each parameter list is shown as a folder, and by clicking on it, all parameters in the list are displayed together with the current value.

Copying the complete set of parameter values from an attached controller to a file can be done at the click of a button - this file can be cloned onto a new controller to provide a duplicate.

The modem driver of iTools is a server application which permits iTools to run as a client on the same, or any other networked PC. Connections can also be made through a remote station.

## Eurotherm network

- Display the complete network hierarchy
- View all nodes in ALIN/MODBUS RTU/PROFIBUS DPV1 network
- View individual nodes storage areas and properties
- Copy files to and from individual node by dragging and dropping
- Ability to stop/start nodes
- Explorer look and feel



Eurotherm Network provides a view of any kind of actual attached network supported directly by Eurotherm (e.g. ALIN, MODBUS RTU, PROFIBUS DPV1), and is similar to the 'Network Neighbourhood' facility of Windows 95/NT. By expanding a network, all nodes discovered will be displayed, together with indication of type, name, network address etc.

Various operations (such as Start, Stop and Download), can be performed on the network nodes via either the context menu or the file menu. Expanding a node will browse the node's filing system and show the contained files. Files can be copied to and from the node by dragging and dropping from explorer folders.

## LINOPC

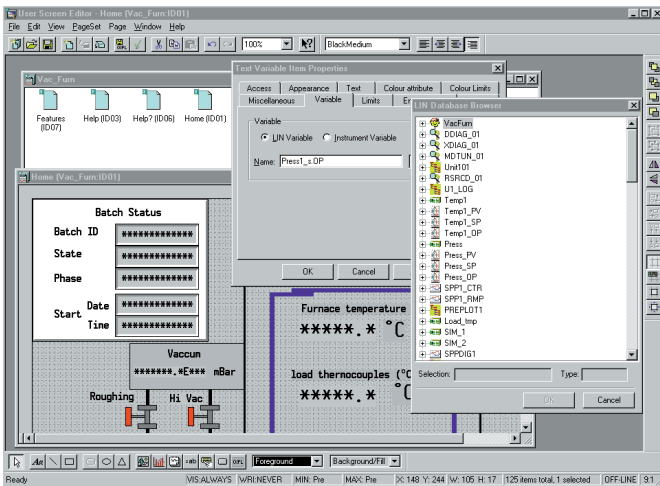
- Provides connectivity between PC and Control networks
- Supports Arcnet, Serial and Ethernet communications
- OPC server
- LIN and Modbus protocols available
- Advanced diagnostic tools
- Simulation port for LIN database
- Inbuilt security to control write access

LINOPC is the software layer that controls all chart access to the control networks. It supports different physical media (including Arcnet, Serial and Ethernet) with LIN and Modbus protocols.

Multiple client applications are supported simultaneously and these include LINTools monitor, T3500, Operations Server and 3rd party OPC clients.

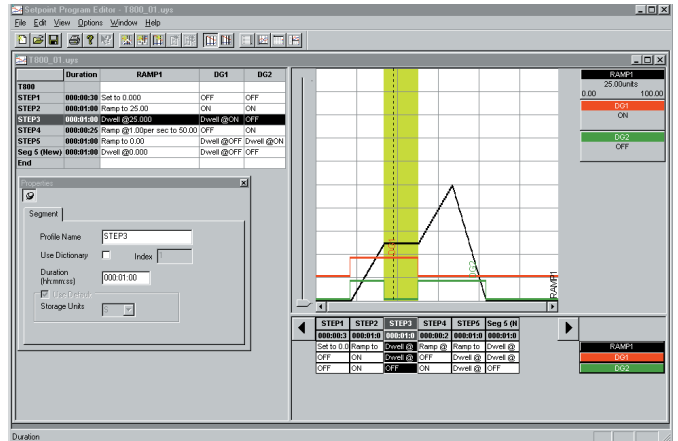
## User Screen Editor

- Graphical Editor for Visual Supervisor
- WYSIWYG development window
- View individual nodes storage areas and properties
- Page item property page



## Setpoint Program Editor

- Configures Setpoint programs for Visual Supervisor
- Graphical representation of trend setpoints
- Subprogram, chart and setpoint panes



**EUROTHERM LIMITED**

<http://www.eurotherm.co.uk>

### UK SALES OFFICE

**Eurotherm Ltd**  
Faraday Close Durrington Worthing  
Worthing BN13 3PL United Kingdom  
Tel. +44 (0)1903 205277 Fax +44 (0)1903 236465  
Email [info@eurotherm.co.uk](mailto:info@eurotherm.co.uk)

### US OFFICE

**Eurotherm**  
741-F Miller Drive  
Leesburg VA 20175-8993  
Tel. 1-703-443-0000 Fax 1-703-669-1300  
Web [www.eurotherm.com](http://www.eurotherm.com) Email [sales@eurotherm.com](mailto:sales@eurotherm.com)

© Copyright Eurotherm Limited 1999, 2000, 2002

All rights are strictly reserved. No part of this document may be reproduced, modified, or transmitted in any form by any means, nor may it be stored in a retrieval system other than for the purpose to act as an aid in operating the equipment to which the document relates, without the prior written permission of Eurotherm limited.

Eurotherm Limited pursues a policy of continuous development and product improvement. The specifications in this document may therefore be changed without notice. The information in this document is given in good faith, but is intended for guidance only. Eurotherm Limited will accept no responsibility for any losses arising from errors in this document.

