

EYris

Data Management
Software

Help Manual



Invensys

EUROTHERM

© 2007 Eurotherm Limited

All rights are strictly reserved. No part of this document may be reproduced, modified, or transmitted in any form by any means, nor may it be stored in a retrieval system other than for the purpose to act as an aid in operating the equipment to which the document relates, without the prior written permission of Eurotherm limited.

Eurotherm Limited pursues a policy of continuous development and product improvement. The specifications in this document may therefore be changed without notice. The information in this document is given in good faith, but is intended for guidance only. Eurotherm Limited will accept no responsibility for any losses arising from errors in this document.

Eyris Help

Table Of Contents

1	Introduction	1
1.1	Projects	1
1.2	Bridge software	1
1.3	Conventions	1
1.4	Effectivity	1
1.5	Glossary of terms	1
1.5.1	Bridge software	2
1.5.2	Eyris software	2
1.5.3	Firewall	2
1.5.4	Instrument	3
1.5.5	Review Software	3
1.5.6	Page	3
1.5.7	Panel	4
1.5.8	Project	4
1.6	Operating system notes	4
1.6.1	Supported Operating systems	4
1.6.2	Minimum System requirements	4
1.6.3	Security messages (Windows XP)	5
1.6.4	Security messages (Windows 2003)	7
1.6.5	Security Messages (Windows Vista)	7
2	Starting a new project	8
2.1	Getting started	8
2.1.1	Create your own project	8
2.1.2	Open an existing project	8
2.2	New project	9
2.2.1	Scan for instruments online	10
2.2.2	Start Scan	12
2.2.3	Specify instrument details yourself	14
2.2.4	Auto Create Default Pages	15
2.2.5	Specify your own runtime pages	15
2.2.6	ADD	16
2.2.7	MORE	16
2.2.8	Finish	17

2.3	Dynamic pages	18
2.4	Fixed Pages	19
3	The Project	20
3.1	Configuration Page	20
3.1.1	Tree View	20
3.1.2	Centre Pane	21
3.1.3	Help Pane	21
3.1.4	Changing Pane width	21
3.2	Displays view	21
3.2.1	Home Page	21
3.2.2	Autogeneration	22
3.3	Page View	22
3.3.1	Fixed Pages	22
3.3.2	Dynamic Pages	22
3.4	Instruments view	23
3.5	Instrument view	24
3.5.1	Name	24
3.5.2	IP Address/Host Name	25
3.5.3	Groups & Views	25
3.5.4	Security Access	25
4	Using the Browser	26
4.1	The Browser	26
4.2	Keys	27
4.2.1	Login	27
4.2.2	Home	27
4.2.3	Pages	27
4.2.4	Layout	28
4.2.5	Builder	28
4.2.6	Review	28
4.2.7	Help	28
4.3	Overview page	29
4.3.1	Title bar	29
4.3.2	Thumbnails	31
5	Keys, Toolbar icons and menus	32
5.1	Keys	32
5.1.1	Login	32

5.1.2 Home	32
5.1.3 Pages.....	32
5.1.4 Layout.....	33
5.1.5 Builder.....	33
5.1.6 Help	33
5.1.7 Show editor buttons	34
5.1.8 Show full size panel	34
5.2 Toolbar icons	35
5.2.1 New project.....	35
5.2.2 Open Project.....	35
5.2.3 Cut	35
5.2.4 Copy	35
5.2.5 Paste.....	35
5.2.6 Help	35
5.2.7 Run Browser	35
5.3 Menus	36
5.3.1 Actions menu	36
5.3.2 Edit menu.....	36
5.3.3 File menu	37
5.3.4 Help menu	37
5.4 Context menus.....	38
5.4.1 Project context menu	38
5.4.2 Display context menu.....	38
5.4.3 Pages context menu	38
5.4.4 Instrument context menu	39
5.4.5 Deleting an instrument.....	39
5.4.6 Scan list context menu.....	39
6 Other items	40
6.1 Different Locales.....	40
6.2 IP Address	41
6.3 Remote User Name	42
6.4 System message centre	42
6.5 Domain Name server	43
7 Glossary.....	44
Index	47

This page is deliberately left blank

1 Introduction

Eyris software is designed to allow the user to create display pages each showing one or more 'panels', where each panel is a view of a specified recorder as viewed over Bridge software. Once the relevant pages have been created, they can be viewed in real-time using Eyris Browser.

A powerful search facility is built into the software, so instruments can be scanned for automatically. When a recognised instrument is found, it is added to a list on the screen. Once the list is complete, instruments from the list can be 'added to the project', allowing them to be viewed on the display pages. As an alternative to the automatic scan, instruments can be added to the project individually, by specifying name, type, IP address etc.

1.1 Projects



Eyris software uses the concept of 'the Project', where a project is a set of instruments and display pages dedicated to a specific area of control/ monitoring etc. For example if there are six kilns on a site, then it would be normal to have a project for each kiln, containing the instruments monitoring temperatures/exhaust gas composition etc. for that kiln.

1.2 Bridge software

The use of Bridge software is described in the relevant recorder's user guide or options manual, supplied on a CD with the recorder, but some useful tips are included below.

In order that Eyris may communicate successfully with an instrument, the following must be observed:

1. Remote access must be enabled in the target recorder's Security/Access menu.
2. In the same menu, the Remote User Name and the Remote Password can be edited, if the factory defaults are not to be used in the Eyris project.
3. The full version of Bridge must be enabled in the target recorder, if the user is to edit that recorder's configuration. Bridge 'Lite' is a read-only version, allowing the user to view the recorder, but not to reconfigure it. Visually, a Bridge 'Lite' version can be identified by the fact that the Login button at the top left corner of the recorder display is missing.
4. The maximum number of bridge sessions to any one recorder, from one or more hosts, is four for series 5000 recorders, or 10 for 6000 series recorders. A warning message appears if an attempt is made to exceed this maximum.

1.3 Conventions

When instructions are given to use a keyboard key, the key name is displayed thus: <Ctrl>. Keys which are to be pressed simultaneously are displayed thus: <Ctrl> + <C>.

When describing how to access menu items on an instrument, the menu items are separated by a forward slash (/).

For example, 'Config/Instrument' means that the user should operate the 'Config' key and then select 'Instrument' from the drop-down list which appears when the 'Config' key is operated.

1.4 Effectivity

This help system refers to Eyris software version 1.

1.5 Glossary of terms

This topic tries to explain some of the terminology used by Eyris.

1.5.1 Bridge software

This is a proprietary software program which allows a host computer to communicate with any number of suitable instruments, and to emulate these instruments' operator interfaces. (That is, copies of the instruments' display screens appear on the host computer screen. These copies can be scaled to suit user requirements)

The 'Full' version of Bridge (optional extra) grants the remote user full configuration access to the instrument. The 'Lite' version (supplied as standard) is a view only version.

Bridge allows one or more remote host computers to make up to 4 (model 5000 recorders) or up to 10 (model 6000 recorders) connections to a specific instrument at any one time. For each host, only one of these may be a 'Full' connection.

In order to make a connection, the remote user must have the required access permission, remote password and remote user name.

1.5.2 Eyris software

Eyris is a software program which allows a number of suitable instruments to be communicated with using Bridge software. The same access and connection requirements exist for Eyris as for Bridge, but with Eyris, all connections up to the maximum allowable by the instrument, may be 'Full'. The maximum number of instruments which can be communicated with simultaneously depends on the processor speed and RAM size, as described in 'Minimum system requirements', in 'Operating System notes'.

Eyris software is divided into two areas, termed 'Eyris Builder' and 'Eyris Browser'.

Eyris Builder

Eyris Builder allows the user to set up one or more 'projects' where each project contains all the instruments used for a particular control or monitoring application. The display screens (panels) of these instruments are arranged in a number of display pages, which can be defined as fixed or dynamic. Fixed pages are configured (that is, the instrument views which are to appear on each page are set up) as a part of Eyris Builder. Dynamic pages are configured in real time, when running in Eyris Browser.

Instruments can be scanned-for and then added to the project, or an instrument's details can be entered manually. Pages can be generated automatically, or defined by the user. Automatically generated pages can subsequently be edited to become 'user-pages'.

Eyris browser

When Eyris browser is run (by clicking on the 'Run Browser' toolbar icon) an overview page appears, and Eyris attempts to make Bridge connections with all the instruments in the project. The overview page shows a 'thumbnail' for each instrument in the project, giving connection status and (once connected) alarm/battery state etc. Clicking on the 'Pages...' key at the bottom of the screen allows the user to select a page for display.

If a Fixed page is chosen, then the instruments selected for display (the panels) cannot be changed, though the instruments can be configured on an individual basis if the user has the relevant access permissions.

If a dynamic page is chosen then instruments (panels) can be added and deleted, and the display mode (e.g. horizontal trend) and display group can be selected without the user's having to log in to the instrument.

1.5.3 Firewall

Firewall software is intended to protect the computer or network from the external world, by denying access to any user that does not have the correct security credentials. Firewalls can make it difficult or impossible for Eyris to access instruments within a firewall-protected network.

1.5.4 Instrument

Any piece of equipment, on an Ethernet network, which is recognisable by Eyris as being of a known type (i.e. equipment with which Bridge can attempt to make a connection).

1.5.5 Review Software

This proprietary program allows data to be imported from one or more instruments into a database. Data is then accessed from this database, for display on a 'chart' on the computer screen. This allows process values etc. from many instruments to be displayed on a single chart. Full date and time (go to) search facilities are included, as are the ability for the user to annotate the chart, the ability to select data on a batch start/stop basis, the ability to print charts and so on.

When Review is used on its own, or if started using the Review key at the bottom of a Browser display, it is necessary for the user to add the required instruments manually. When started from the Actions menu, the instrument data held by Eyris is made use of to add all the project instruments into Review automatically.

Review can be started either by 'Run Review' selection from the Actions menu, or from a key at the bottom of the browser display.

Security Manager

Security Manager is a software program that provides a central environment within which user accounts can be set up and regular account management carried out. It provides update functionality to user accounts, logins, password changes, etc., and has the ability to distribute the security database to any Security item nodes, including itself, in the security configuration. Security features such as secure electronic signatures, and 'Audit Trail' trace-ability are included.

Although Eyris does not interface directly with Security Manager, both Review software and the Recorder operation do, if the option is enabled in the recorder.

1.5.6 Page

Pages contain a number of 'panels', each of which represents a bridge session to an instrument. The number of panels on the page is user editable. Pages can be generated automatically, or manually.

When generated automatically, Eyris produces one (empty) dynamic page and sufficient fixed pages to contain one panel for each instrument in the project, at four panels per page.

When generated manually, pages are produced one at a time. The user decides whether to produce a fixed or a dynamic page, and if fixed, how many panels per page (one to nine) and 'tiled', 'horizontal' or 'vertical' as the layout. All these items may be edited subsequent to generation.

Pages are viewed in real time by clicking on the 'Run Browser' toolbar icon, and (once connection with the instruments has been established), selecting the desired page using the 'Pages...' key at the bottom of the Screen.

Fixed page

A fixed page contains a user-defined number of 'panels'. Panels can be added or removed, and the instrument they relate to selected, and the instrument's display mode and group chosen, off-line (i.e. in Eyris builder). During on-line (Browser) operation no editing of fixed pages is possible.

When selecting fixed pages for viewing, fixed pages are identified within the 'Pages...' key drop down menu by the icon above.

Dynamic page



Dynamic pages can be viewed only from Eyris Browser. When running Eyris browser (i.e. when on-line), panels can be added, removed etc. and their content defined as for fixed pages.

When selecting dynamic pages for viewing, fixed pages are identified within the 'Pages...' key drop down menu by the icon above.

1.5.7 Panel

In the Eyris context, a panel is a Bridge session between the host computer and an instrument. Panels appear on pages where the number of panels and their content (instrument, display mode etc.) can be edited either off-line (fixed pages) or on-line (dynamic pages).

1.5.8 Project



A project consists of a number of instruments which are associated with a particular control or monitoring function. In addition, the project contains display pages which are configured to contain various views of these instruments, as though the user were looking at a panel of instruments. Providing that login details for the instruments are correct, that access permissions for the user are sufficient and that Bridge software is enabled in the relevant instruments, then instruments can be reconfigured via Eyris instead of at the user interface.

1.6 Operating system notes

1.6.1 Supported Operating systems

Eyris is supported on the following operating systems:

Windows 2000, Windows 2003, Windows XP professional, Windows XP home.

1.6.2 Minimum System requirements

To guarantee 10 bridge sessions: 1GHz processor and 256MB RAM.

To guarantee 25 Bridge sessions: 2GHz processor and 512MB RAM

To guarantee 50 Bridge sessions: 3GHz processor and 1 GB RAM

Screen resolution

Minimum screen resolution = 1024 x 768 pixels.

1.6.3 Security messages (Windows XP)

The messages below may appear when Eyris software is run for the first time.

Windows Security Alerts

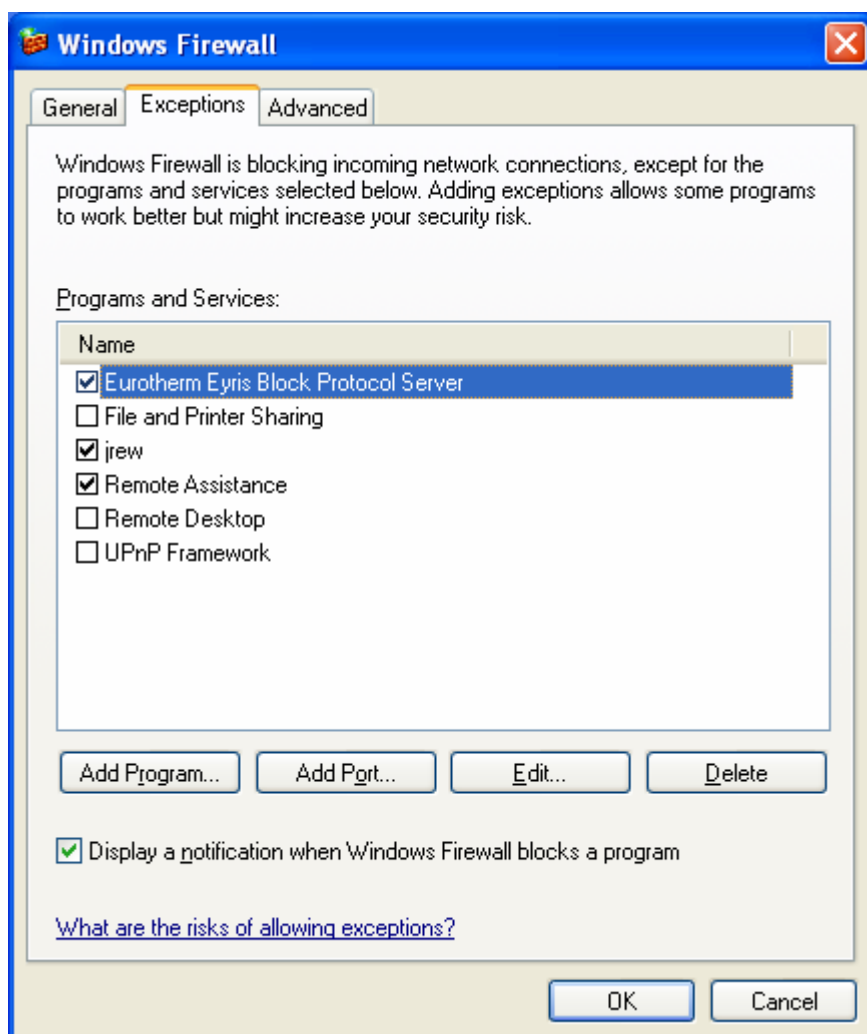
Click on 'Unblock' in each case.



1.6.3 SECURITY MESSAGES (Windows XP) (Cont.)

If, perhaps for security reasons, 'Keep Blocking' has been chosen in either case, software access to the connection must still be enabled or the user will not be able to search for instruments in Eyris Builder or connect to instruments in Eyris Browser. To enable access:

1. Click on 'Start'
2. Click on 'Control Panel'
3. Double click 'Windows Firewall'
4. Select the 'Exceptions' tab (see figure below).
5. If necessary, click on the tick boxes for 'jrew' and 'Eurotherm Eyris Block Protocol Server' ensuring that both boxes are ticked before clicking 'OK'.




1.6.4 Security messages (Windows 2003)

The following message may appear for Windows 2003 users when using Eyris Browser.

Note: Despite the implications of the text in this message, there is no interaction between Eyris software and any Website. The message is generated by the Windows operating system whenever browser windows or html files are utilised.



To resolve this problem:

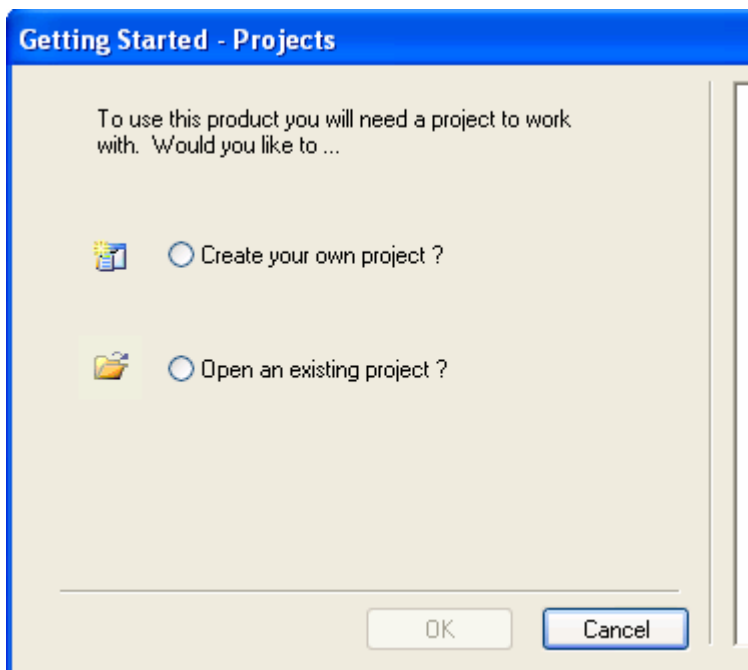
1. Open Internet Explorer by clicking on the 'e' symbol  or by clicking on 'Internet Explorer' in the Start/All Programs list.
2. Open 'Internet Options' (Tools menu)
3. Choose the 'Security' tab.
4. Use the 'Default Level' button to set 'Internet Security' to 'Medium'.

1.6.5 Security Messages (Windows Vista)

To be issued later.

2 Starting a new project

2.1 Getting started



Eyris software uses the concept of 'the Project', where a project is a set of instruments and display pages dedicated to a specific area of control/ monitoring etc. For example if there are six kilns on a site, then a separate project could be established for each kiln, with each project containing the instruments monitoring temperatures/exhaust gas composition etc. for that kiln.

It is recommended that projects be given appropriately descriptive names.

The first time that Eyris software is started, or if Eyris cannot find a project to open, the 'Getting Started' page (above) appears allowing the user to choose to create a new project, or to open an existing project. If Eyris can find one or more projects, then it opens the last-used project, and the getting started page does not appear.

2.1.1 *Create your own project*


This starts the 'New Project' wizard described in 'New Project'

2.1.2 *Open an existing project*

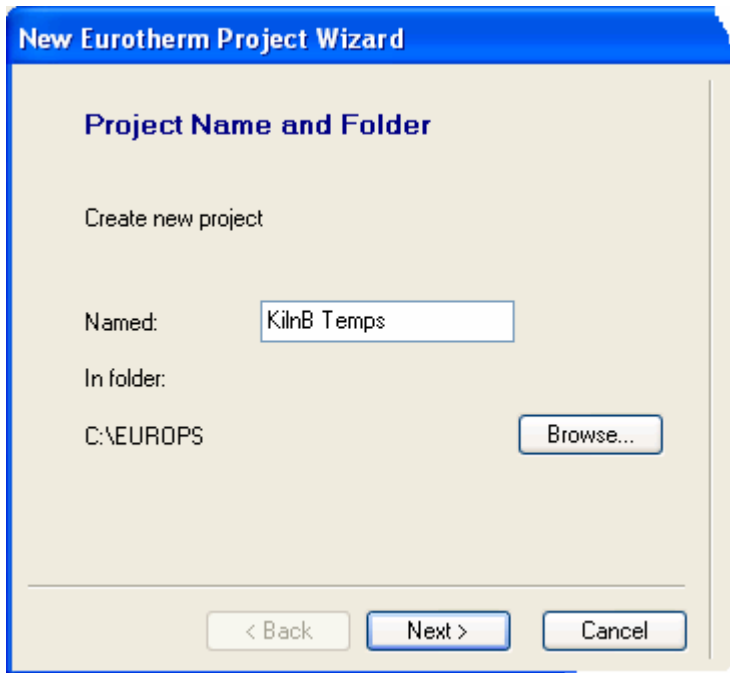
This opens a standard browser window allowing the user to locate and select a project to open.

2.2 New project

The new project 'Wizard' appears:

1. if 'Create your own project?' is selected in the Getting Started page.
2. when the 'New Project' toolbar icon is clicked-on  New Project
3. when 'New project' is selected from the File menu
4. when the shortcut <ctrl>+<N> is used.

The first screen requires the user to enter a name for the project, and allows the selection (via the Browse button) of a path name other than the default.

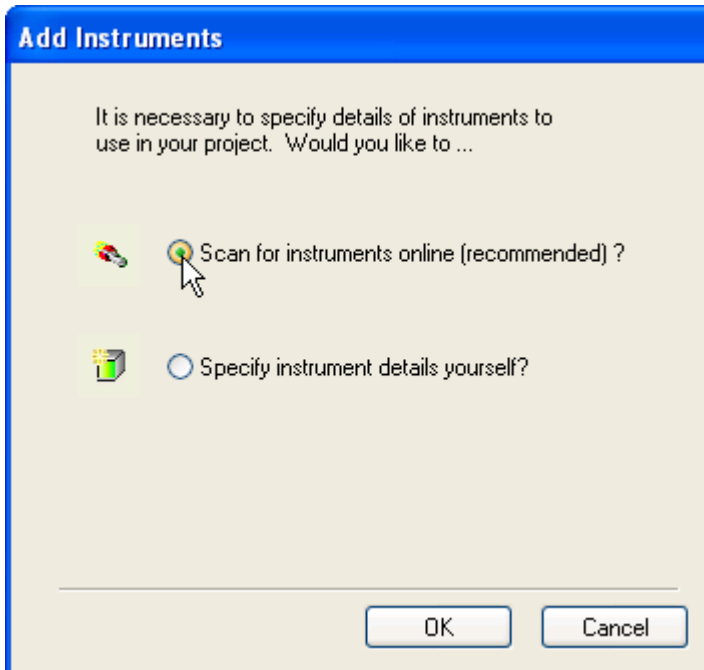


Clicking on the 'Next' key calls the shortcut page which allows the user to choose whether or not a shortcut for the project is to be created on the desktop.

Clicking 'Finish' calls the 'Instruments' page which allows the user to choose either to scan for instruments online, or to specify instrument details manually. For the purposes of this discussion, an instrument is defined as any piece of equipment, on an Ethernet network, which is recognisable by Eyriss as belonging to a known type (i.e. equipment with which Bridge can attempt to make a connection).

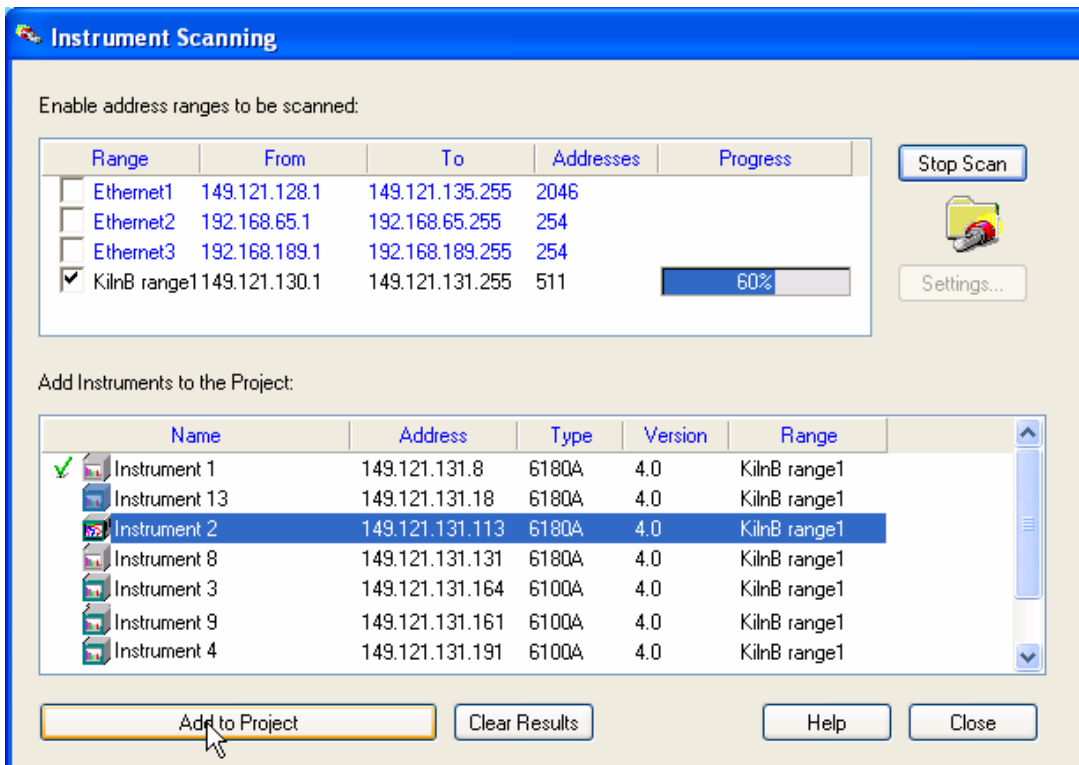
The 'Instruments' page can also be called by right clicking on the top level Instrument icon or on the Project icon in the left-hand pane and then selecting 'Add Instruments', or by selecting 'Add Instruments' from the 'Actions' menu.

2.2 NEW PROJECT (Cont.)



2.2.1 Scan for instruments online

This selection may be made from the New project 'Instruments' page, from the Actions menu 'Add instruments' item or from the Instrument context menu which appears when the mouse is right-clicked on 'Instruments' in the tree view.



A number of default scan ranges appear (based on the local network), and one or more of these may be selected if any is suitable. Alternatively, the user may enter a scan range which includes only those IP addresses of interest. These IP addresses must be determined from the Network/Address configuration area of each relevant instrument. All selected (ticked) ranges are scanned when 'Start Scan' is clicked on. Default scan ranges are presented in blue; user-entered ranges appear in black.

2.2.1 SCAN FOR INSTRUMENTS ON LINE (Cont.)

Corporate firewalls may prove to be an obstacle to the success of the scan process. Selecting 'Deep scan' for a range may help to overcome this problem, as Eyris tries to make a connection with every address in the range. As this can be time consuming, it is not included in the normal scan process.

Note: Some instruments can be configured to get their IP address from a DHCP server. In such cases, it is likely that the IP address will change each time the instrument is power cycled. This will lead to a comms failure message which can be cleared only by re-scanning or by entering the new IP address manually from the Instrument View page. To overcome this problem, if Domain Name Service is enabled (Network/Name) then <local host>.<domain> can be used instead of the IP address.

Once the scan is completed, one or more of the detected instruments are added to the project by:

1. Clicking on the required instrument to highlight it (or use <Shift> and or <Ctrl> keys whilst clicking on more than one instrument)
2. Clicking on the 'Add to Project' key.
3. Using the context menu which appears when the scan list is right clicked-on.

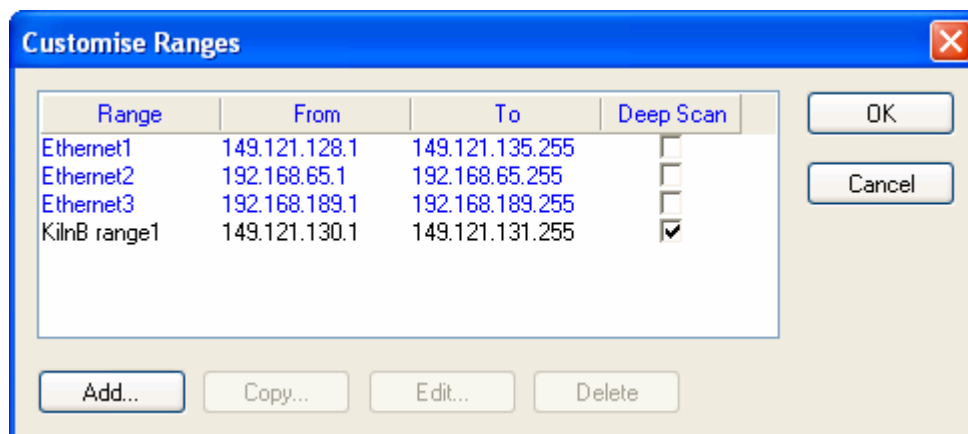
Instruments which have been added to the project are identified by a green tick.

Once all the required instruments have been added to the Project, and 'Close' clicked-on, the user can then choose to create display pages, either automatically, or manually.

Note: It is not possible to remove instruments from the project from this area. To delete an instrument, highlight it in the tree view, and select 'Delete instrument'.

Settings

Clicking on 'Settings...' calls the 'Customise Ranges' page as shown below.

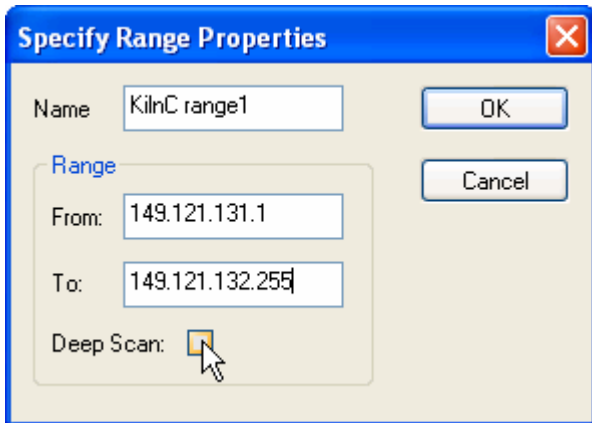


Clicking on 'Add...' calls the 'Specify Range Properties' page which allows the user to select a name for the scan range, and to enter start and end IP addresses.

2.2.1 SCAN FOR INSTRUMENTS ON LINE (Cont.)

Rules:

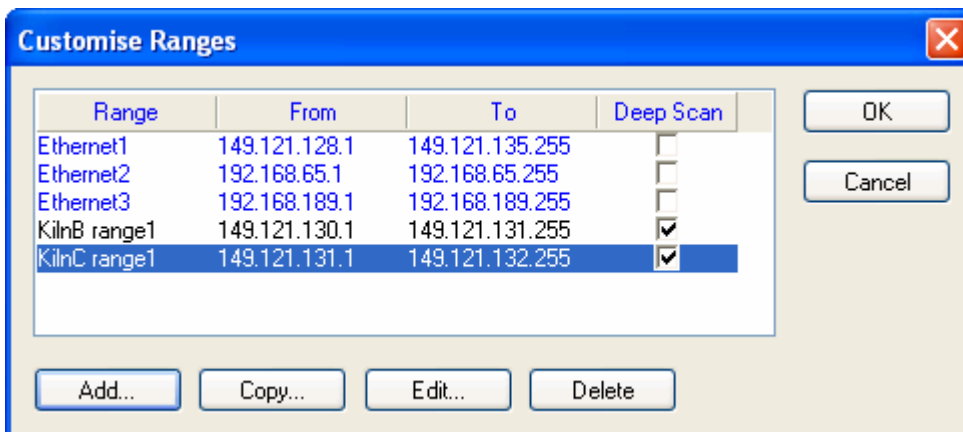
1. Each group of three characters making up the IP address must be in the range 0 to 255, but leading zeros may be omitted. Attempts to enter values outside this range result in an 'Invalid format for IP value..' message appearing, and the address is rejected.
2. The 'To' IP address must be greater than the 'From' address. If this is not the case, an 'invalid IP range...' message appears, and the range selection is rejected.



The 'Specify Range Properties' dialog box has a title bar with a close button. It contains the following fields and controls:

- Name: KilnC range1
- Range section:
 - From: 149.121.131.1
 - To: 149.121.132.255
 - Deep Scan: (with a mouse cursor over it)
- Buttons: OK, Cancel

If the above rules are complied with, clicking on OK causes the new range to be accepted and to appear in the 'Customise Ranges' display.



The 'Customise Ranges' dialog box has a title bar with a close button. It contains a table of ranges and several buttons:

Range	From	To	Deep Scan
Ethernet1	149.121.128.1	149.121.135.255	<input type="checkbox"/>
Ethernet2	192.168.65.1	192.168.65.255	<input type="checkbox"/>
Ethernet3	192.168.189.1	192.168.189.255	<input type="checkbox"/>
KilnB range1	149.121.130.1	149.121.131.255	<input checked="" type="checkbox"/>
KilnC range1	149.121.131.1	149.121.132.255	<input checked="" type="checkbox"/>

Buttons: Add..., Copy..., Edit..., Delete, OK, Cancel

'Add...' allows a further range to be defined.

'Copy...' allows the highlighted (clicked-on) range to be copied, and new name to be allocated to it. The range can be edited now, or it can be edited later using the Edit... key.

'Edit...' allows the highlighted (clicked-on) field's name and address range to be edited.

'Delete' deletes the highlighted range - without confirmation.

'Cancel' causes any of the above actions to be ignored.

Deep Scan

If an instrument is known to exist, but is not picked up by the scan, check that 'Bridge' is enabled at the instrument. If so, problems maybe being caused by firewall settings on the host computer or on the network. If 'Deep Scan' is selected, Eyris runs a slower algorithm and attempts to make a bridge connection with each address in the range. This may help to solve the problem.

2.2.2 Start Scan

Clicking on this initiates the search. Once an instrument is recognised, communications are established with it, and further information extracted and displayed ('(Pending...)' appears whilst this step is in progress). Once all the required instruments are included in the scan list, along with their names etc. the scan can be stopped. An instrument can be added to the project as soon as the associated ('(Pending...')disappears, whether or not the scan is still running.

If the scan is stopped, then re-started, it starts from the beginning again, but the previous results are not cleared, but are added to or amended as necessary.

Scan Phases

Phase 1: Entire Network is 'pinged' and any recorders (recognised by their MAC addresses) are added to the scan list .

Phase 2: Eyris attempts to connect to addresses which are known to be active, but for which, the MAC address cannot be determined due to the presence of network routers. Any suitable recorders detected are added to the scan list.

Deep Scan

If deep scan is enabled for a range (in Settings... page) , then when phase 2 is complete, phase 3 is entered.

in phase 3, Eyris attempts to connect to every IP address to establish if there is an instrument connected, and if so, whether it is of the relevant type or not. This overcomes the problem of 'pings' being blocked by a router or other network component. Any suitable recorders detected are added to the scan list.

ToolTip

The progress of the scan is indicated by the percentage bar associated with the selected scan range. In addition, if the cursor is hovered over this bar, a phase status report appears for some seconds.

Possible status reports are: 'Phase 1- Quick scan', 'Phase 2 - Medium scan' and (if 'Deep scan' is enabled for the range), 'Phase 3 - Slow scan'.

2.2.3 Specify instrument details yourself

Selecting this from the 'Instruments' page allows the user to enter a specific instrument's details. In order to do this the instrument's name, type, software version number and IP address must be known.

Further, the recorder must have Bridge 'Full' or 'Lite' enabled (confirm in Config/Options display), and 'Connect from Remote' enabled in the Security/Access area of configuration.

Instrument name

Enter the name to be used for the instrument within this Eyris project. This may be the same as the name defined in the Configuration/Instrument area of the instrument's configuration or not, as required. Typing in a name here does not change the instrument name in the recorder.

Note: There are a number of views (in particular the thumbnails in the Browser Overview page) which are not wide enough to display the whole of a long instrument name. It is thus recommended that either the instrument name is abbreviated (e.g. 'TempsB2' instead of 'Temperatures B2') or that the most significant part of the name is entered first (e.g. B2 Temperatures). Otherwise in the Overview page, for example, there might be several thumbnails with the name 'Temperature', and the 'Show Full size panel' key would have to be operated for each one, in order to find out which instrument is which.

IP address/Host name

The current IP address is found in the Network/Address area of the recorder's configuration. For some instruments, the IP address may change when the unit is power-cycled.

As an alternative, the Host Name may be used, in the format <Local host>.<Domain>, where Local Host and Domain are to be found in the Network/Name area of configuration, provided that Domain Name Service is enabled. This might require help from the IT department.

Use Connection Defaults

If this checkbox is ticked, the default Remote Username and Remote Password are used when communicating with this instrument. These defaults may vary according to the options fitted to the instrument.

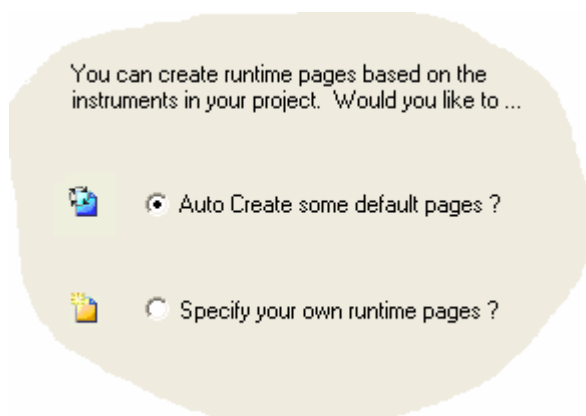
If the checkbox is not ticked, then the Remote User name and Password (as set in the Security Access area of recorder configuration) must be entered.

2.2.4 Auto Create Default Pages

Pages contain a number of 'panels', each of which represents a bridge session to an instrument. Clicking on the 'Auto Create..' button causes Eyris to create one (empty) dynamic page and sufficient fixed pages to contain one panel for each instrument in the project, at four panels per page. Fixed pages can subsequently be edited (off line) to remove or add panels, to change display group or display mode and to set the layout of the page. Dynamic page content is defined at Run-time (i.e. when Eyris Browser is running live Bridge sessions with the relevant instruments). Changes made to group and mode selection are saved within the Browser, but are not reflected in the associated Eyris Builder.

Pages are viewed in real time by clicking on the 'Run Browser' toolbar icon, and (once connection with the instruments has been established), selecting the desired page using the 'Pages...' key at the bottom of the Screen.

This display appears as a part of the New project definition, or it can be called from the Actions menu 'Add pages' item. See also 'Specify your own runtime pages'.

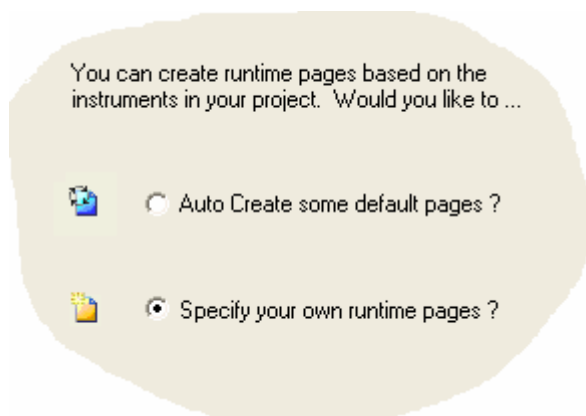


2.2.5 Specify your own runtime pages

Pages contain a number of 'panels', each of which represents a bridge session to an instrument. Clicking on the 'Specify your own runtime pages' button allows the user to create a dynamic or a fixed page as described below. Fixed pages can subsequently be edited (off line) to remove or add panels, to change display group or display mode and to set the layout of the page. Dynamic page content is defined at Run-time (i.e. when Eyris Browser is running live Bridge sessions with the relevant instruments).

Pages are viewed in real time by clicking on the 'Run Browser' toolbar icon, and (once connection with the instruments has been established), selecting the desired page using the 'Pages...' key at the bottom of the Screen.

This display appears as a part of the New project definition, or it can be called from the Actions menu 'Add pages' item. See also 'Auto Create Default Pages'



2.2.4 SPECIFY YOUR OWN RUNTIME PAGES (Cont.)

Clicking on 'Specify your own runtime pages' calls the Display Page definition window:

The screenshot shows a dialog box titled "Display Page" with the following fields:

- Page Title:** A text input field containing "Temperatures".
- Page Type:** A dropdown menu with "Fixed Page" selected.
- Layout:** A dropdown menu with "Tiled" selected.
- Number of Panels:** A spinner box set to "1" with a range indicator "(1 - 9)".

Page Title

Allows the user to enter a suitable name for the page.

Page Type

Fixed or Dynamic may be chosen as page type.

Layout

For Fixed pages only allows 'Tiled', 'Horizontal' or 'Vertical' to be chosen.

Tiled: Causes the panels to be arranged in a grid of up to 3 x 3 panels

Horizontal: Panels are arranged in rows (i.e. one above the other, across the width of the display area).

Vertical: Panels are arranged in columns (i.e. side-by-side from top to bottom of the display area).

Number of panels

Allows the number of panels per page to be defined up to a maximum of nine. Further panels can be added later if required.

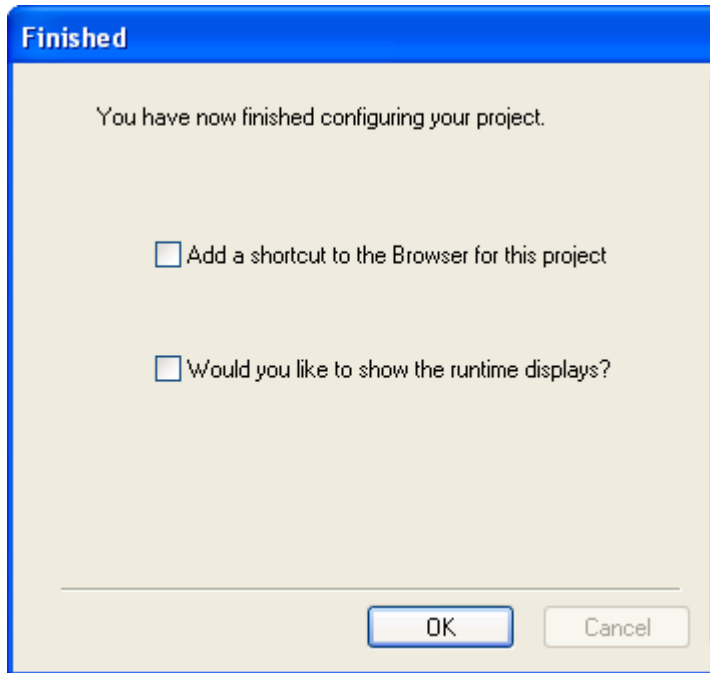
2.2.6 ADD

Adds the new page to the project, and displays the 'More' key, below.

2.2.7 MORE

This key appears after 'ADD' has been clicked on in order to add a newly defined page to the project. 'More' allows a further page to be defined

2.2.8 Finish



This display appears as the final stage of New Project creation. If the 'Help' checkbox is set (ticked) then a Help pane appears in which relevant help details are displayed.

Add a shortcut to the browser...

Clicking on this checkbox causes a shortcut to the Browser to appear on the desktop, along with the name of the associated project .



When Eyris browser is run (by clicking on the 'Run Browser' toolbar icon) an overview page appears, and Eyris attempts to make Bridge connections with all the instruments in the project. The overview page shows a 'thumbnail' for each instrument in the project, giving connection status and (once connected) alarm/battery state etc. Clicking on the 'Pages...' key at the bottom of the screen allows the user to select a page for display.

If a Fixed page is chosen, then the instruments selected for display (the panels) cannot be changed, though the instruments can be configured on an individual basis if the user has the relevant access permissions.

If a dynamic page is chosen then instruments (panels) can be added and deleted, and the display mode (e.g. horizontal trend) and display group can be selected without the user's having to log in to the instrument.

Would you like to show...

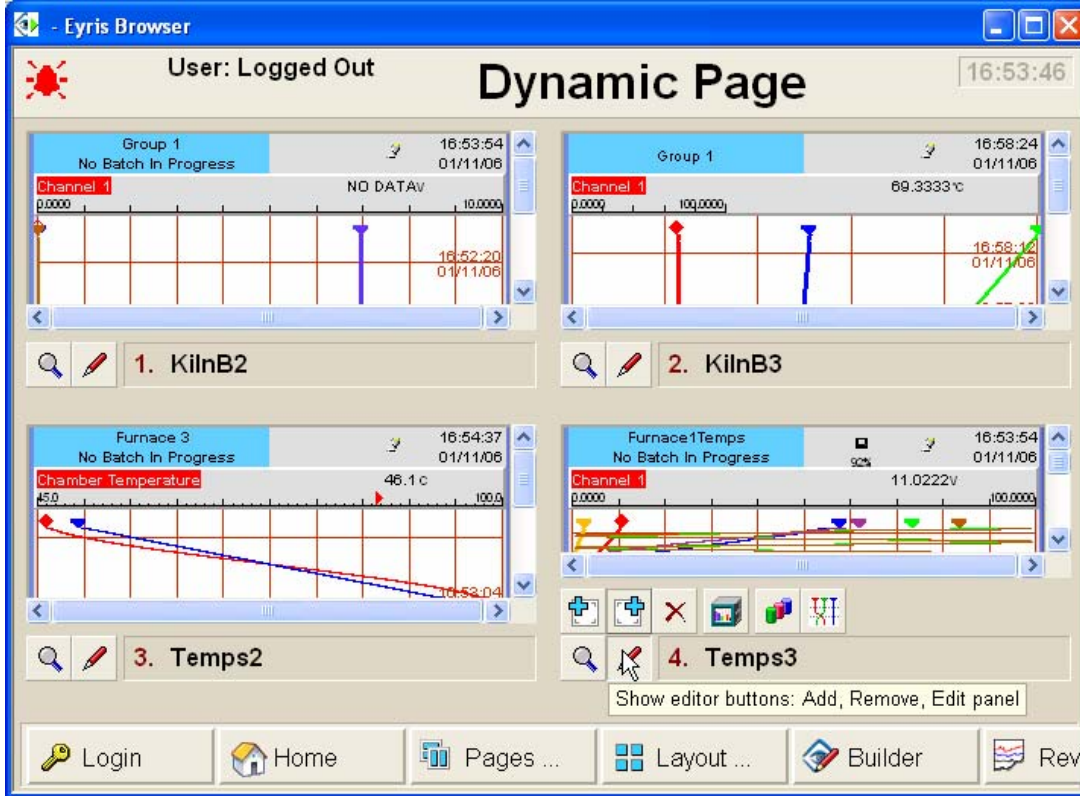
Clicking on the 'Would you like to show the runtime displays?' checkbox followed by OK, starts the Browser. Otherwise OK causes a return to the project configuration page.

2.3 Dynamic pages

Which instrument panels appear in a dynamic page is defined in a Browser run-time session. New dynamic pages are empty, and must be configured before a meaningful display can be created. To this end, edit keys allow the user to add/remove panels, to select an instrument from a pick-list and to select the group and display mode for that group.

For new pages, only the instrument select key may be used, all the other keys being greyed out.

A typical run-time (Browser) display is shown in the figure below:

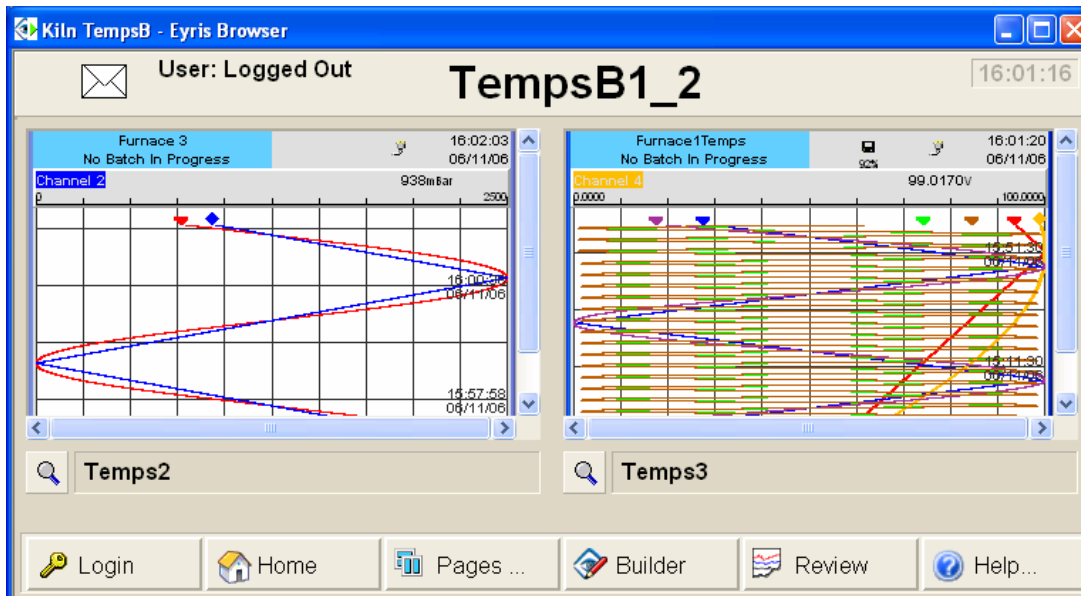
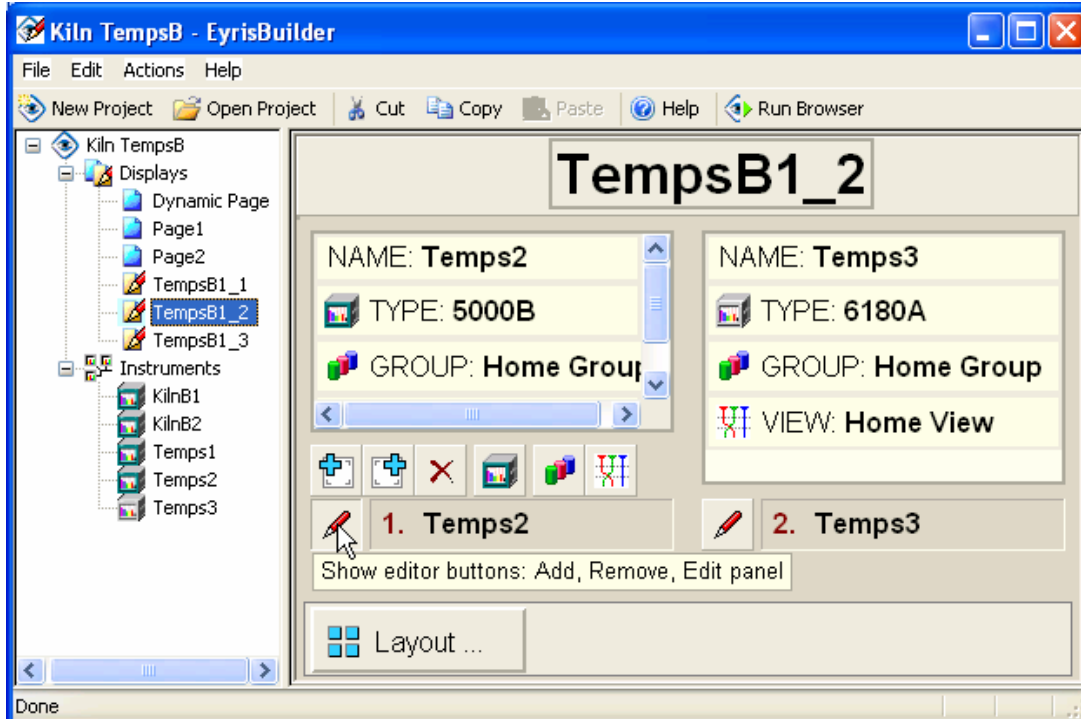


An instrument can be 'zoomed into' by clicking on the 'Show full size panel' key. This allows viewing and/or configuration of the instrument for users with the correct login and appropriate access permissions. This 'zoomed-in' view is the only view which allows access to an instrument.

2.4 Fixed Pages

Which instrument panels appear in a fixed page is defined in Eyris builder. Edit keys allow the user to add/remove panels, to select an instrument from a pick-list and to select the group and display mode for that group. The layout key at the bottom allows the user to select tiled, horizontal or vertical as the panel layout.

A configuration page, and the resulting run-time (Browser) display are shown in the figures below: The number of panels has been limited to two for the sake of clarity.



Note that in the run-time display, an instrument can be 'zoomed into' by clicking on the 'Show full size panel' key. This allows viewing and/or configuration of the instrument for users with the correct login and appropriate access permissions. This 'zoomed-in' view is the only view which allows access to an instrument.

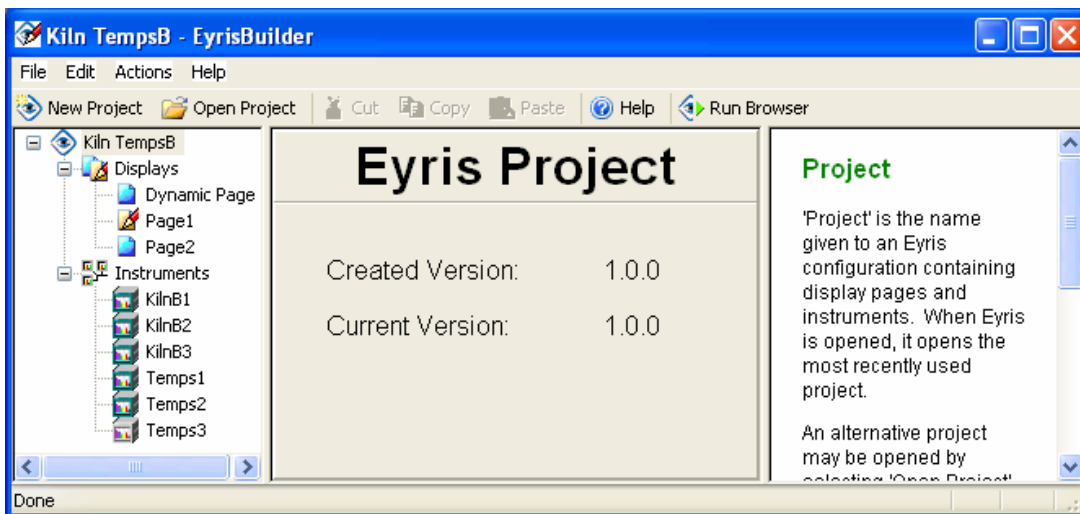
3 The Project

3.1 Configuration Page

Eyris Builder allows the user to set up one or more 'projects' where each project contains all the instruments used for a particular control or monitoring application. The display screens (panels) of these instruments are arranged in a number of display pages, which can be defined as fixed or dynamic. Fixed pages are configured (that is, the instrument views which are to appear on each page are set up) as a part of Eyris Builder. Dynamic pages are configured in real time, when running in Eyris Browser.

Instruments can be scanned-for and then added to the project, or an instrument's details can be entered manually. Pages can be generated automatically, or defined by the user. Automatically generated pages can subsequently be edited to become 'user-pages'.



New projects are created as described in 'New Project'. Existing projects are opened either by clicking on the desktop shortcut created (optionally) as part of the 'New Project' procedure, by double clicking on a project folder located (by default) in the EuroPS directory or by clicking on the 'Open project' tool bar icon from a different open project.



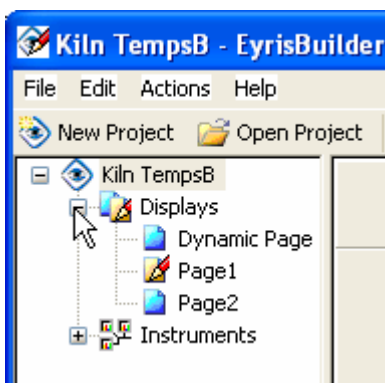
As can be seen, the Configuration page appears as a tri-pane display, with a toolbar and menu bar above. The three panes are called the Tree view, the centre pane and the Help pane. This layout is used throughout the project, although in some displays, the Help Pane can be enabled and disabled.

3.1.1 Tree View

This appears in the left hand pane, and when fully expanded, shows all the display pages and all the instruments associated with the project. Pages and instruments can be added, removed, renamed etc. by right-clicking the appropriate item and selecting the required function from the context menu which appears. See the separate topic 'The Tree' for more details.

To expand a list, click on the associated  icon; to contract, click on the  icon (as shown below).

The information in the central pane reflects the highlighted selection in the tree.



3.1.2 Centre Pane

This contains information relating to the tree view selection. In the example above, the Project is highlighted and the center pane shows the current software version and the software version used to create this project.

Topics 'Displays View', 'Page View', 'Instruments View' and 'Instrument View' give details of the centre pane content when other tree view items are highlighted.

3.1.3 Help Pane

For relevant display pages, this 'dynamic help' pane contains a short description of the items appearing in the centre pane, which, in turn, reflects the item selected in the Tree.

In some cases, a checkbox Help appears in the centre pane. Clearing this checkbox causes the right hand Help pane to disappear. <Ctrl>+<F1> toggle the pane on and off in Eyris Builder, or it can be turned on and off from the 'Help' menu.

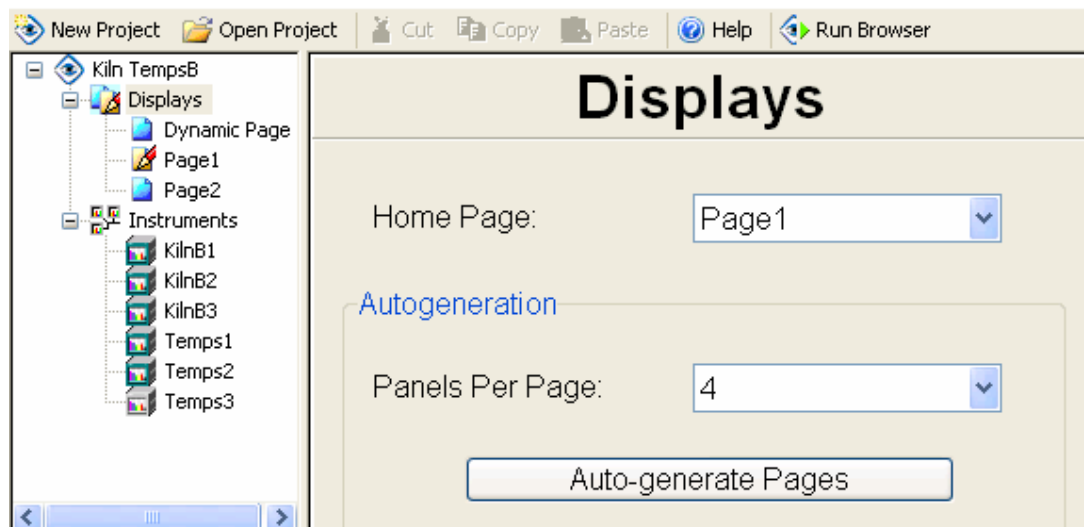
3.1.4 Changing Pane width

The sides of the central panel can be moved, in order to change the relative sizes of the three panes. To move the panel edge, hover over the edge until the cursor changes to the parallel line symbol shown below, then click-drag the edge to the desired position.



3.2 Displays view

This view appears when 'Displays' is clicked on in the 'tree view' in the left pane. Individual page details can be viewed by clicking on a particular page name.



3.2.1 Home Page

Allows the user to define a particular page as the 'Home page' to be displayed when the 'Home' key at the bottom of any of the Browser pages is clicked on.

3.2.2 Autogeneration

Auto-generate pages.

Clicking on this key causes Eyris to generate one dynamic page, and as many fixed pages as are necessary to contain one panel per instrument, according to the number of panels per page defined above and the number of instruments in the project.

Fixed page content can be edited before Eyris Browser is invoked, but cannot be edited on line. Dynamic pages can be edited only on line.

Autogenerated pages appear in the tree view with a blue page icon (📄). If pages have also been generated manually, or if autogenerated pages have been edited, they appear in the tree view with a gold page icon (📄🔧).

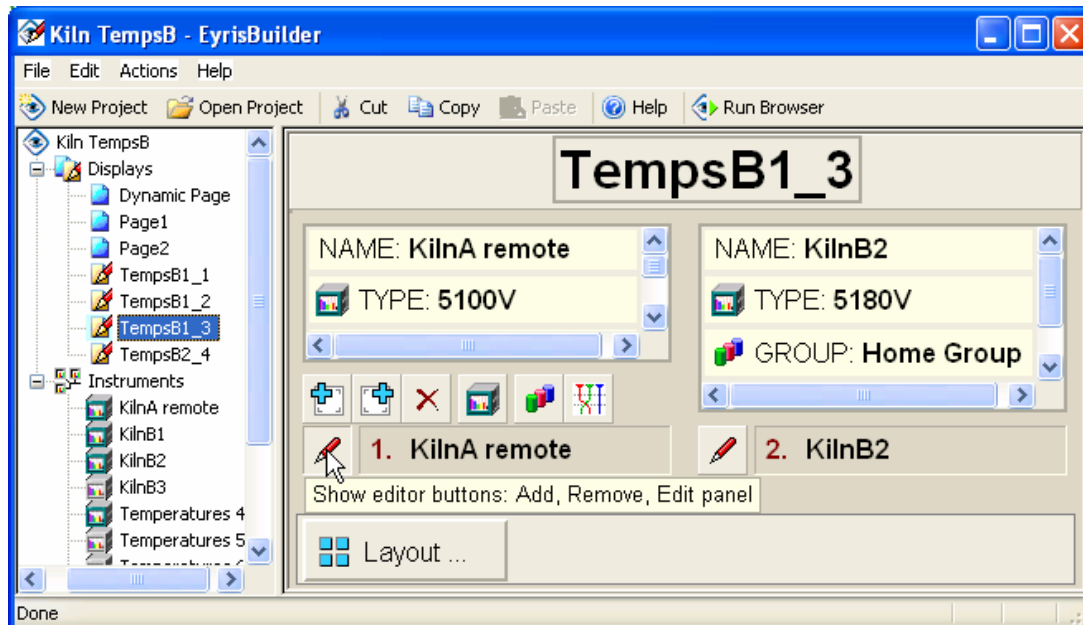
Panels Per Page:

This allows the user to set the default number of panels which appear on auto-generated fixed pages. A panel is a Bridge view of an instrument.

See the glossary of terms for more details of pages.

3.3 Page View

Called by clicking on the relevant page name in the tree view. Note that the page names can be edited in the 'Tree View', and the edited page name appears at the top of the page.



3.3.1 Fixed Pages

When a fixed page icon is clicked-on, its configuration page opens, as shown above. The panels are arranged in alphabetical instrument order unless they have been edited by the user. Panel content can be edited here by means of the editing tools revealed when the 'Show editor buttons' key is clicked on.

The layout key can be used to select 'Tiled' (grid), Horizontal, or Vertical for the panel layout.



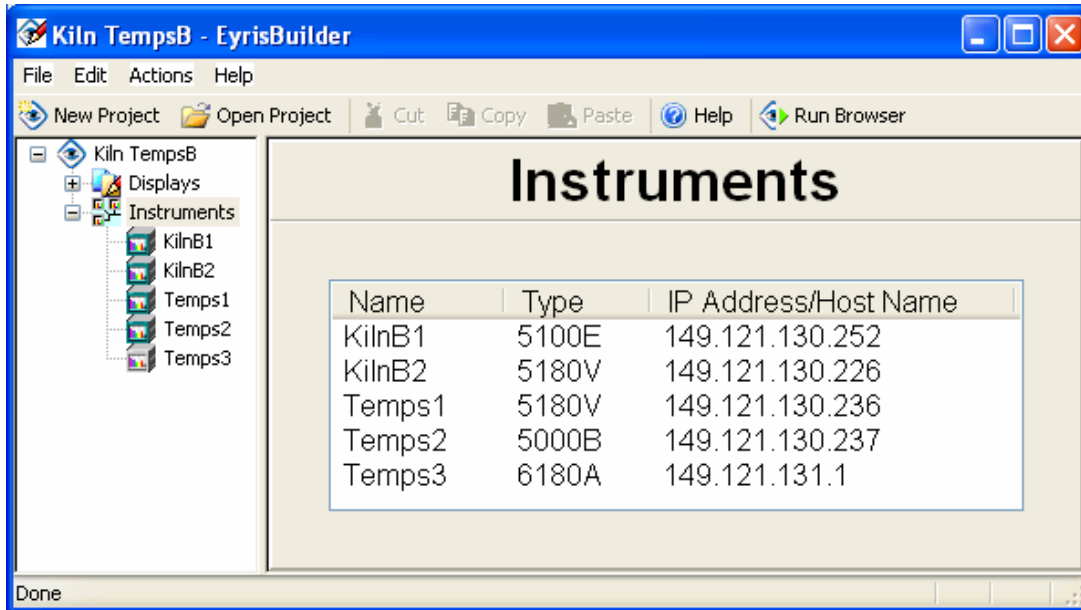
3.3.2 Dynamic Pages

If a dynamic page is clicked-on, the configuration page appears, but the centre pane contains only the message: 'Dynamic Page: Page content defined at runtime'. In other words, Eyris browser must be started, and the dynamic page selected for viewing before the page content can be edited (using tools identical with fixed page tools).

New dynamic pages are empty, and all editing tools are 'greyed out' (i.e. not available for use) except the 'Select instrument...' which is used to create the first panel.

3.4 Instruments view

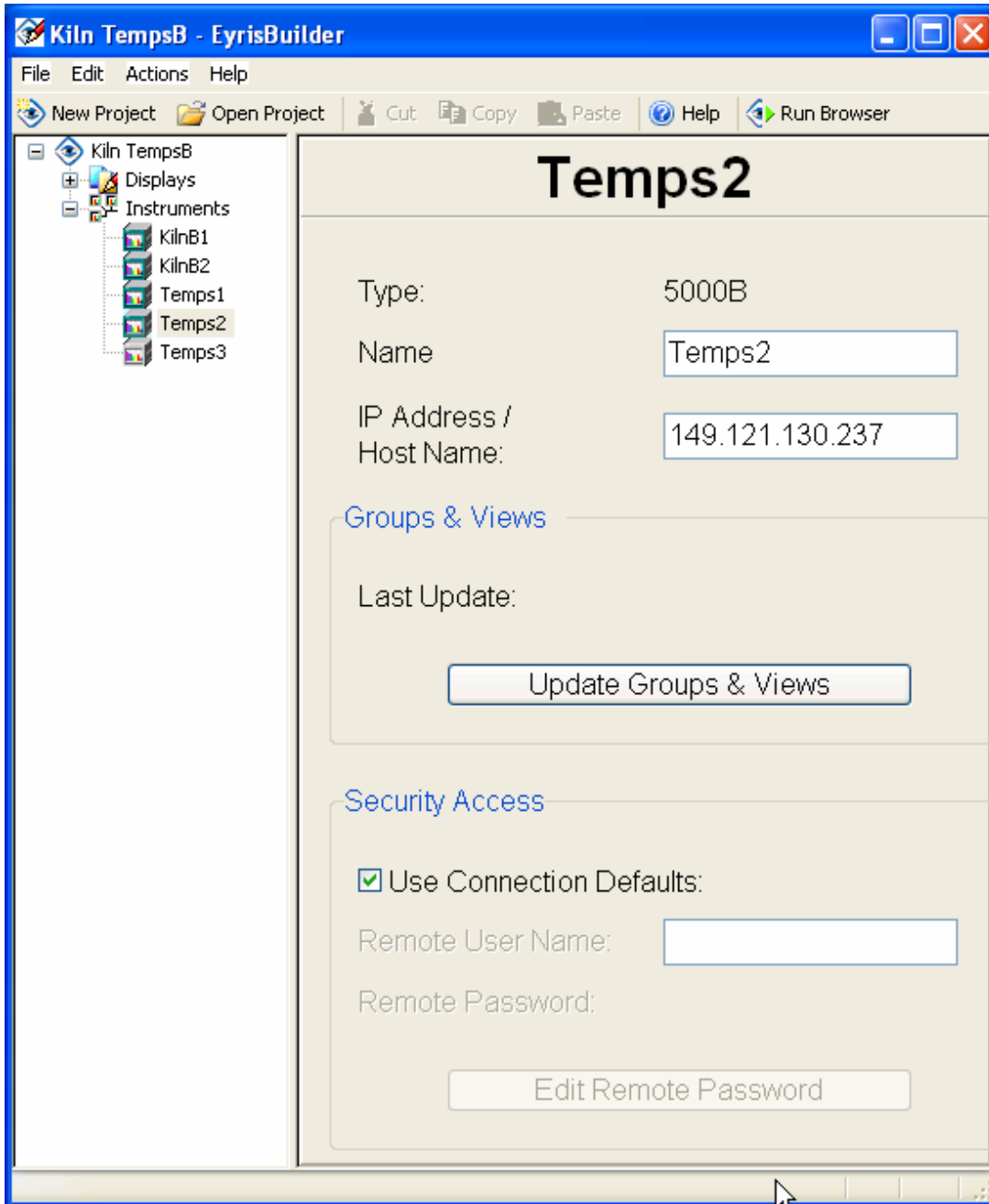
This view appears when 'Instruments' is clicked on in the 'tree view' in the left pane. Individual instruments can be viewed and their details edited, by clicking on a particular instrument name, and modifying the Instrument's name and/or IP Address and/or login details as required.



This read-only overview page displays an alphabetical list of instruments, together with the associated instrument type and IP Address. Depending on the width of the display, it may be necessary to use the scroll bar to reveal the IP address/Host Name column.

3.5 Instrument view

When an instrument in the 'tree list' is clicked on, data for that instrument appears, as shown below. The name of the instrument appears at the top of the page.



The Instrument type is a read-only field derived from the instrument during the scan process, or as entered manually.

3.5.1 Name

The instrument name can be changed for use with this project. This change is not written to the instrument, so should a scan process be initiated, the original name of the unit will re-appear. The new name is copied to the 'Tree view' in the left-hand pane.

Note: There are a number of views (in particular the thumbnails in the Browser Overview page) which are not wide enough to display the whole of a long instrument name. It is thus recommended that either the instrument name is abbreviated (e.g. 'Temp2' instead of 'Temperatures B2') or that the most significant part of the name is entered first (e.g. B2 Temperatures). Otherwise in the Overview page, for example, there might be several thumbnails with the name 'Temperature', and the 'Show Full size panel' key would have to be operated for each one, in order to find out which instrument is which.

3.5.2 IP Address/Host Name

This field allows the unit's IP address to be edited. This is useful in (for example) the situation where the instrument IP address has changed for any reason, and a re-scan is not desirable. Alternatively, if Domain Name Service is enabled at the instrument, the Local host name and Domain can be used instead of the IP address in the form: <Hostname>.<Domain name>.

3.5.3 Groups & Views

Update Groups and Views allows the user to read the current instruments' group and mode information into the Eyris project. This means that the Browser display pages reflect the actual instrument displays. If the user has selected a group or viewing mode that is not enabled at the instrument, Eyris defaults to the Home group and Home display mode.

3.5.4 Security Access

Use connection defaults

If this is ticked, Eyris will connect automatically if the default settings for remote user name and password have not been edited at the instrument.

If connecting with an instrument which has a different locale setting from that of the host computer, then 'Use Connection Defaults' must be disabled and the Remote User Name and Remote Password for the instrument must be entered as described below. See 'Different Locales' for more details

Remote User Name

Editable only if 'Use Defaults' is not ticked. This should contain the Remote User Name as set up in the Instrument's Security/Access configuration area.

Remote Password

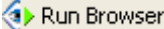
Edit remote Password becomes active only if 'Use Defaults' is not ticked. The field should contain the Remote Password as set up in the Instrument's Security/Access configuration area.

4 Using the Browser

4.1 The Browser

This is the name given to the run-time display of connected instruments. The Browser is saved separately from the Builder that created it, so if the Builder file is moved, the Browser file will not be able to link to it.

The Browser can be started by:

1. Clicking on the 'Run Browser' toolbar icon .
2. Selecting 'Run Browser' in the Actions menu.
3. Clicking the 'Would you like to show the runtime displays?' checkbox in the 'Finish' page of the New Project sequence.
4. Clicking on the shortcut on the desktop, generated if the 'Add a shortcut...' checkbox has been clicked in the 'Finish' page of the New Project sequence.

The Browser opens with the Home page displayed; by default, the Overview page. The Overview page contains 'thumbnails' for all the instruments in the tree list. Some seconds are occupied whilst Eyris attempts to establish Bridge sessions with these instruments. Once Bridge sessions have been established, one of the fixed or dynamic pages listed under 'Displays' in the Tree view can be called to the display.

Fixed pages show those views (panels) defined in the page configuration. The content of Dynamic pages must be configured, on line using the edit tools.

By clicking on the 'Full page' key associated with an instrument, a full-screen display of that instrument appears, allowing the instrument to be viewed and configured as though from the instrument's operator interface. This is the only view from which the user can access the instrument's configuration.

See 'Overview page', 'Fixed pages' and/or 'Dynamic pages' for more details.

Notes:

1. **The maximum number of bridge sessions (panels) which can be run on Eyris Browser is a function of the Processor speed and of the size of RAM of the host computer. See 'Minimum System Requirements' for more details.**
2. **See separate topic 'Different Locales' if connecting between a host computer in one locale and instruments in one or more different locales.**

4.2 Keys

A number of keys appear at the bottom of the Browser display pages, as follows:

4.2.1 Login



Login allows the user to enter a User Name (or User ID) and a password. All instruments in the project which have this User Name (or User ID) and password configured in the Security/Access area of configuration are then logged into when the OK key is operated. When logged-into in this way, instruments remain logged into until a different login is requested, until the project is closed, or until the Login key is operated for a second time and 'Logout' clicked-on.

Rules

1. Each required instrument must have Bridge 'Full' enabled.
2. Login details are as set up in the Security/Access area of the instrument configuration.
3. All instruments with the entered User name (or User ID) and Password are logged into. Error messages are generated for all instruments which do not share the entered User Name/ID and Password.
4. Any instrument logged out of individually by the user will return to the logged in state when 'Back' is clicked-on

Without the above 'global login', the user may log into an instrument, only when that instrument is in 'full size panel'

mode. To enter 'full size panel' mode, click on the 'Show full size panel' key:

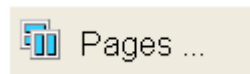


4.2.2 Home



This key calls the home page to the display. Home page is defined in Displays configuration.

4.2.3 Pages...



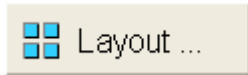
Allows the user to choose which page to display from a pop-up list which contains all the pages configured in the project (i.e. all the pages in the tree list). The currently selected page is in Bold type. Three types can be chosen: the overview page, a dynamic page or a fixed page. Each type of page has a different icon as follows:

Fixed page:  Page1

Dynamic page:  TempsB2_4

Overview page:  Overview

4.2.4 Layout



Layout ...



For dynamic pages only, allows the user to select Tiled, Horizontal or Vertical.

As implied by the icons, 'Tiled' lays the panels out in a grid; 'Horizontal' results in the panels being placed one above the other across the page; Vertical places the panels beside one another, occupying the full page height.

4.2.5 Builder

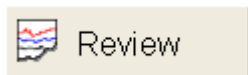


Builder

If the associated Builder project is open, this closes the current Browser session and returns the user to the Builder configuration page. If the Builder project has been closed, no action is taken.

The 'Builder' key does not appear if the browser has been opened from a source other than Eyris Builder (e.g. from a desktop shortcut).

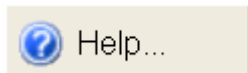
4.2.6 Review



Review

Opens Review software, allowing data to be imported from one or more instruments and saved in a database, for use in creating charts, spreadsheets etc.

4.2.7 Help



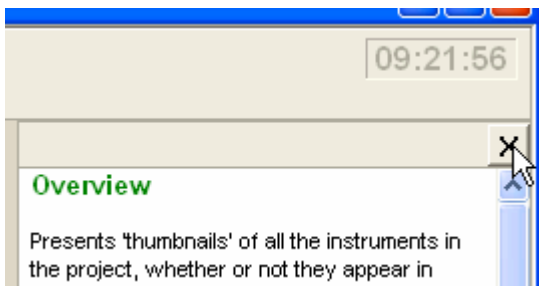
Help...

About

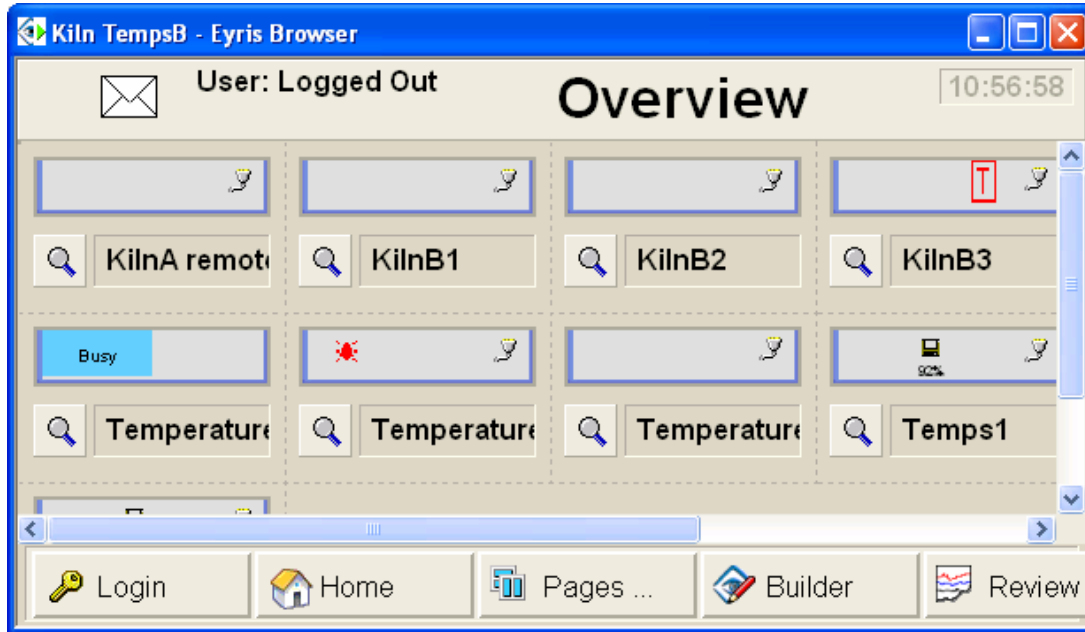
Shows the Eyris software version.

Help

Toggles the right hand pane open/closed. When open, the pane can also be closed by clicking on the close button at the top right corner of the pane.



4.3 Overview page



The Overview page consists of a Title bar at the top of the page, a 'thumbnail' display for each instrument in the project, (whether or not the instrument is included in a display 'Page'), and a number of 'Browser' keys at the bottom of the screen. The illustration above has been sized to fit the page, with the result that many of the thumbnails and some of the keys at the bottom are not fully visible. It is not recommended that such a frame be used in practise, as difficulties arise when invoking the full page view.

When first opened, the software attempts to start bridge sessions with each of the instruments in the project. This can take some tens of seconds, during which time connection status messages appear in the thumbnails.

Should a problem occur with a connection, the thumbnail shows 'Offline' with the connection icon 'crossed out', or 'Busy'. In such cases, clicking on the 'Show full size panel' icon, produces a full page display of the instrument, and this includes an error message, giving possible reasons for the problem.



Crossed out connection icon



Show full size panel icon

Clicking on the Show full size panel icon also allows the user to operate (view and configure) the instrument if the user's login has the relevant access permissions associated with it (found in the instrument's Security/Access area of configuration).

See 'The Browser' for a description of the Login etc. keys at the bottom of the screen.

4.3.1 Title bar

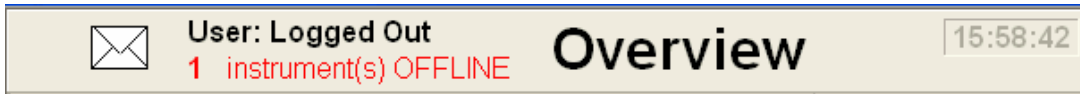
The title bar appears at the top of all Browser pages, and can contain the following items (from left to right):

1. Alarm (bell) symbol - see below.
2. Login information. The examples below show 'logged out'. If the User is logged in, the relevant 'user name' or 'Full User name' is displayed instead.
3. Communications failure. Displays a message if one or more instruments cannot be communicated with because of a communications failure.
4. Envelope symbol if one or more instruments has a system message to be viewed.
5. Page Name ('Overview' in the examples below)
6. Time

4.3.1 TITLE BAR (Cont.)

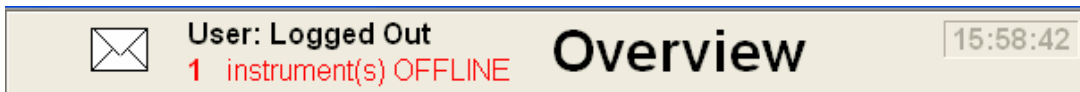
Alarm Status indication

No active alarms

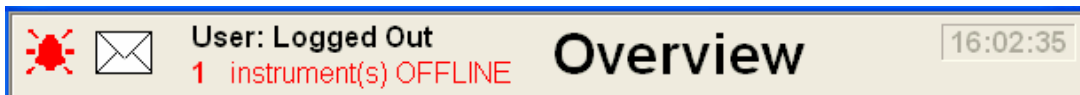


Active alarms Unacknowledged

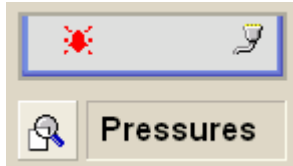
Title bar flashes between the two displays below whilst an alarm is active and unacknowledged.



Active alarms acknowledged



4.3.2 Thumbnails



Thumbnails consist of a Status bar at the top, a 'full page' icon and the instrument name.

Status bar

One or more of the symbols described below may appear in the status bar. Unless otherwise stated, full details of these symbols are to be found in the user guide supplied with the instrument.



Indicates that there is an instrument alarm active in this instrument.



One or more channel alarms are active in this instrument. Steady if acknowledged, flashing if unacknowledged.



If this symbol appears, the instrument's battery should be replaced as soon as is possible.



This indicates that there is a mass storage device (e.g memory stick, floppy disk) inserted and selected as the current device. A % figure below the disk symbol gives the % full state of the device.



This shows that the instrument is archiving over FTP.



This symbol means that the instrument's configuration is currently being updated (synchronised) as a result of a change made in a Bridge session. No further edits of this instrument may take place (at the recorder or via Bridge) whilst this symbol is on display.



Indicates that 'Trial mode' is in operation.



Appears when communications with the instrument have been established. This symbol does not appear at the instrument user interface and is therefore not described in the instrument user guide



Appears when communications cannot be established with an instrument. Clicking on the 'Show full size panel icon' (below) produces a full-screen size view of the instrument, containing an error message giving possible causes for the communications failure. This symbol does not appear at the instrument user interface and is therefore not described in the instrument user guide.

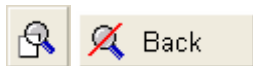


Appears if the instrument has system messages related to Eyriss. Messages which relate to failed startup are displayed each time 'Full page View' is selected.

Messages are accessed by going to full page view (below) and clicking on the recorder status bar (top right hand section of the screen), then on 'System Message centre'.

(This symbol does not appear at the instrument user interface and is therefore not described in the user guide.)

Full Page



Clicking on the 'Show full size panel' symbol causes a bridge view of the instrument to fill the page. This allows full access to the configuration of the recorder, assuming that the user has the relevant access permissions and that Bridge 'full' is enabled.

Click on the 'Back' key to return to the Overview page.

5 Keys, Toolbar icons and menus

5.1 Keys

5.1.1 Login

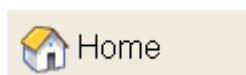


Login allows the user to enter a User Name (or User ID) and a password. All instruments in the project which have this User Name (or User ID) and password configured in the Security/Access area of configuration are then logged into when the OK key is operated. When logged-into in this way, instruments remain logged into until a different login is requested, until the project is closed, or until the Login key is operated for a second time and 'Logout' clicked-on.

Rules

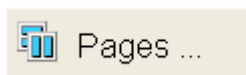
1. Each required instrument must have Bridge 'Full' enabled.
2. Login details are as set up in the Security/Access area of the instrument configuration. Where 'Login by User List' has been enabled in the Security/Management area of configuration, then the user's 'Full User Name' or the 'User ID' can be used. If 'Login by User List' is not enabled, only the 'User ID' is acceptable. In either case, the 'Full User Name' appears as the logged-in user.
3. Login names are not case sensitive.
4. All instruments with the entered User name (or User ID) and Password are logged into. Error messages are generated for all instruments which do not share the entered User Name/ID and Password.
5. Any instrument logged out of individually by the user will return to the logged in state when 'Back' is clicked-on

5.1.2 Home




This key calls the home page to the display. Home page is defined in Displays configuration.

5.1.3 Pages



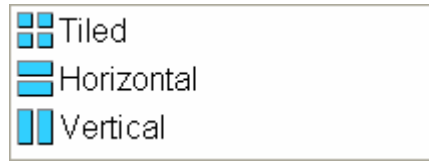
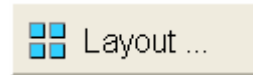
Allows the user to choose which page to display from a pop-up list containing all the pages defined for this project. The current page is in Bold type. There are three types of page: the overview page, dynamic pages and fixed pages. Each type of page has a different icon as follows:

Fixed page:  Page1

Dynamic page:  TempsB2_4

Overview page:  Overview

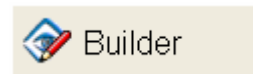
5.1.4 Layout



For dynamic pages only, allows the user to select Tiled, Horizontal or Vertical.

As implied by the icons, 'Tiled' lays the panels out in a grid; 'Horizontal' results in the panels being placed one above the other across the page; Vertical places the panels beside one another, occupying the entire page height.

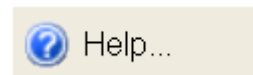
5.1.5 Builder



If the associated Builder project is open, this closes the current Browser session and returns the user to the Builder configuration page. If the Builder project has been closed, no action is taken.

The 'Builder' key does not appear if the browser has been opened from a source other than Eyris Builder (e.g. from a desktop shortcut).

5.1.6 Help



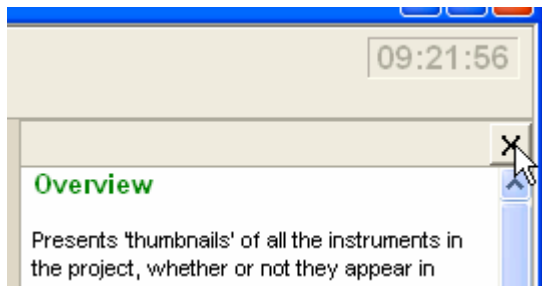
Clicking on this key causes a pick-list to appear containing 'About' and 'Help'.

About

Shows the Eyris software version.

Help

Toggles the right hand pane open/closed. When open, the pane can also be closed by clicking on the close button at the top right corner of the pane.



5.1.7 Show editor buttons



Clicking on this key reveals the panel editing tools which allow the layout of pages to be defined.



Add new panel at position: N Inserts a new panel at the current position (N). The existing panel and any subsequent panels move rightwards/downwards.



Add new panel at position: N+1. Inserts a new panel to the right of the current panel (N). Any existing panels move rightwards/downwards.



Remove this panel. Deletes the current panel. Subsequent panels move leftwards/upwards.



Select an instrument for this panel. Displays a pop-up list of instruments to replace the current instrument in this panel.



Select a Bridge group. Allows a particular display group to be selected (from a pop-up list) for use in this panel.



Select a Bridge view. The user can select a display view (vertical trend, horizontal trend, vertical bargraph, horizontal bargraph, circular trend or numeric, user screen) for this panel. This tool is disabled if 'Home' group is selected (above). This is because Eyriss cannot determine which group is the Home group, and therefore which display modes are enabled for it.

The 'View' icon indicates the selected mode:



Vertical Trend



Horizontal Trend



Vertical Bar



Horizontal Bar



Circular trend

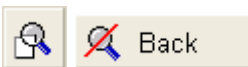


Numeric page



User screen

5.1.8 Show full size panel



Clicking on the 'Show full size panel' symbol causes a bridge view of the instrument to fill the page. This allows full access to the configuration of the recorder, assuming that the user has the relevant access permissions and that Bridge 'full' is enabled.

Click on the 'Back' key to return to the previous page.

5.2 Toolbar icons

5.2.1 New project



Clicking on the new project toolbar icon initiates the startup procedure for a new project. See 'Starting a new project'

5.2.2 Open Project

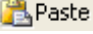


Open Project opens a browse window, allowing the user to select the desired project. OK saves and closes the current project and opens the newly selected project in the existing window.

5.2.3 Cut



This allows a page or instrument to be moved from one open project to another. This is done by:

1. highlighting (clicking on) the required item in the source project
2. clicking on the 'Cut' toolbar icon
3. highlighting 'Displays' (for pages) or 'Instruments' (for instruments) in the target project
4. clicking on the 'Paste' icon .

The required item appears in the target project and disappears from the source project.

This function is also available through the Edit menu, the Instrument or Page context menu or by using the shortcut <Ctrl> + <X>

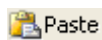
5.2.4 Copy



This allows a page or instrument to be copied either within the same project or to a different project. Similar in operation to 'Cut', above, except that the copied item does not disappear from the source project, and the shortcut is <Ctrl> + <C>.

If copied within the same project, the new item is called 'Copy of *item name*'.

5.2.5 Paste



Transfers cut or copied items to the selected destination. Also available through the edit menu, the Displays or Pages context menus or via the shortcut <Ctrl> + <V>

5.2.6 Help



Opens this help system. This is separate from the help which appears in the tri-pane view.

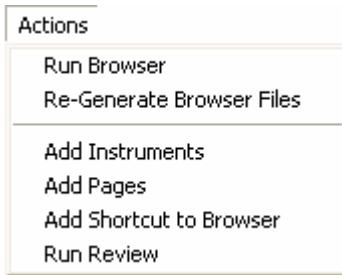
5.2.7 Run Browser



Clicking on this toolbar icon starts Eyris Browser, and displays the Home page. From this page, any other display page can be selected for on-line display.

5.3 Menus

5.3.1 Actions menu



Run Browser

Starts Eyris Browser, and displays the Home page (default = the overview page). Any one of the display pages can be selected for on-line display using the Pages key at the bottom of the screen

Same as 'Run Browser' toolbar icon.  Run Browser

Re-Generate Browser Files

If changes are made to the project (e.g. a page is added) whilst Eyris Browser is running, then clicking on 'Re-generate Browser Files' will cause the Browser to be updated without it's having to be shut down and restarted.

Add instruments

This menu item calls the 'Instruments' page allowing the user to add instruments by initiating a new scan process, or to add one or more instruments manually. See 'New Project' for details.

Add instruments is also selectable from the context menu called by right clicking whilst hovering over 'Instruments' or the Project icon in the tree view.

Add Pages

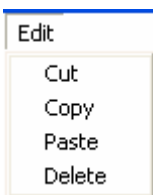
Clicking on this menu item calls the 'Pages' display, allowing the user to add new pages, either automatically or manually. See 'New Project' for more details.

Add Pages is also selectable from the context menu called by right clicking whilst hovering over 'Displays' or the Project icon in the tree view.

Run Review

Opens Review software, pre-loaded with all instruments in this Eyris project.

5.3.2 Edit menu



Cut

Allows the user to move a page or instrument from one project to another, both projects having to be open during the transfer. See 'Cut' in Toolbar Icons for more details. Shortcut = <Ctrl> + <X>.

Copy

Allows a page or an instrument to be copied either within a project or from one project to another. See 'Copy' in Toolbar Icons for more details. Shortcut = <Ctrl> + <C>.

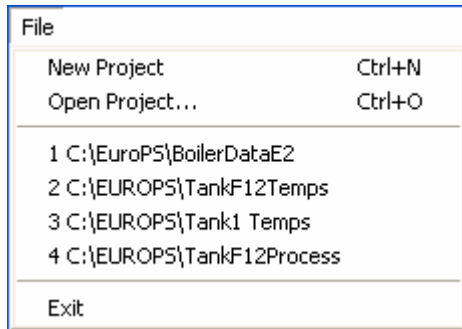
Paste

Moves the cut or copied item to its new destination. Shortcut = <Ctrl> + <V>.


Delete

Deletes the highlighted item from the project, after confirmation.

5.3.3 File menu




New project

Initiates the start up of the New Project Wizard, as described in 'New Project'. Copies the function of the New Project toolbar icon  New Project.

Shortcut = <Ctrl> + <N>.

Open project

When starting up, Eyris Builder always opens the previously used project. 'Open Project' opens a browser window, allowing the user to select an alternative pre-existing project to replace the current project. Copies the function of the Open Project toolbar icon  Open Project.

Shortcut = <Ctrl> + <O>.

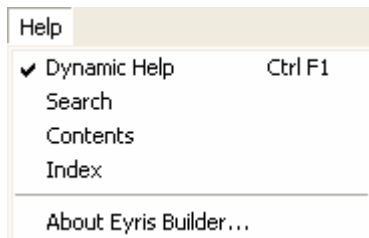
Previous projects list

Contains a list of the most recently used projects. Clicking once on any of these, replaces the current project with the clicked-on project.

Exit

Closes this instance of Eyris Builder.

5.3.4 Help menu



Eyris software comes complete with two sets of help pages, viz Dynamic (right-hand pane) and Full (F1) help. Generally, Full help includes much the same information as is to be found in Dynamic help, but provides more detail, with links to associated topics, and comes with full index and search facilities.

Dynamic Help

This opens (ticked) and closes (not ticked) the right-hand help pane. Short cut is <Ctrl> + <F1>

Search, Contents, Index

These selections open the main (F1) help system with the Search, Contents or Index tab active, according to selection.

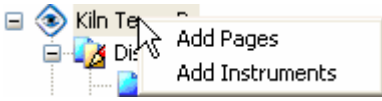
About Eyris Builder...

Calls a display showing the Eyris version currently in use for this project.

5.4 Context menus

5.4.1 Project context menu

This menu appears when the mouse is right-clicked whilst the cursor is hovering over the Project icon in the Tree View.



Add Pages

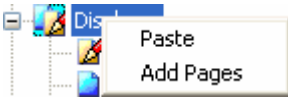
Clicking on this menu item calls the 'Pages' display, allowing the user to add new pages, either automatically or manually. See 'New Project' for more details. Add Pages appears as part of the New Project sequence and is also available from the Actions menu and from the Pages context menu.

Add Instruments

Clicking on 'Add instruments' calls the 'Instruments' page allowing the user to add instruments by initiating a new scan process, or to add one or more instruments manually. See 'New Project' for details. Add instruments appears as part of the New Project sequence and is also available from the Actions menu and from the Instruments context menu.

5.4.2 Display context menu

This menu appears when the mouse is right-clicked whilst the cursor is hovering over 'Display' in the Tree View.



Paste

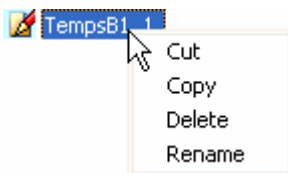
This menu item appears only if a display page has previously been cut or copied. Selecting 'Paste' causes the page to be added to the project.

Add Pages

Clicking on this menu item calls the 'Pages' display, allowing the user to add new pages, either automatically or manually. See 'New Project' for more details. Add Pages appears as part of the New Project sequence and is also available from the Actions menu and from the Project context menu.

5.4.3 Pages context menu

This menu appears when the mouse is right-clicked whilst the cursor is hovering over any of the pages in the Tree View.



Cut

Allows the user to move a page or instrument from one project to another, both projects having to be open during the transfer. See 'Cut' in *Toolbar Icons* for more details. Shortcut = <Ctrl> + <X>.

Copy

Allows a page or an instrument to be copied either within a project or from one project to another. See 'Copy' in *Toolbar Icons* for more details. Shortcut = <Ctrl> + <C>.

Delete

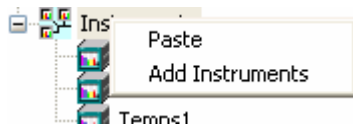
Removes the page from the project.

Rename

Allows the user to edit the page name.

5.4.4 Instrument context menu

This menu appears when the mouse is right-clicked whilst the cursor is hovering over 'Instrument' in the Tree View.



Paste

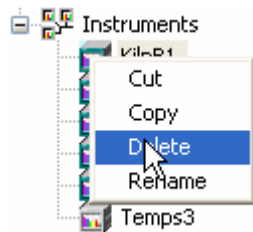
This menu item appears only if an instrument has previously been cut or copied. Selecting 'Paste' causes the instrument to be added to the project.

Add Instruments

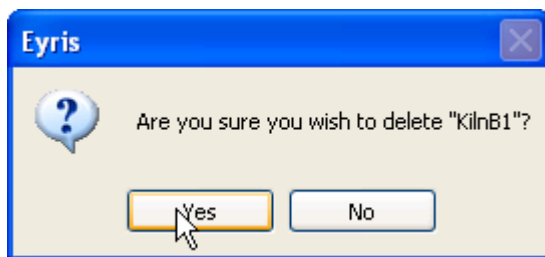
Clicking on 'Add instruments' calls the 'Instruments' page allowing the user to add instruments by initiating a new scan process, or to add one or more instruments manually. See 'New Project' for details.

Add instruments appears as part of the New Project sequence and is also available from the Actions menu.

5.4.5 Deleting an instrument



To remove an instrument from the project, right click on the instrument in the tree view (left hand pane), then left click on 'Delete'.

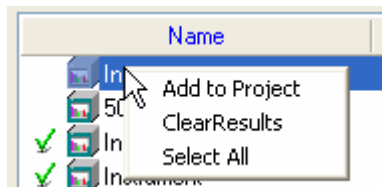


Click on 'Yes' in response to the confirmation request message.

The instrument is deleted from the project.

5.4.6 Scan list context menu

This menu appears when the mouse is right-clicked whilst the cursor is hovering over the Scan list area of the Instrument scanning page.



Add to Project

Adds the highlighted instrument to the project.

Clear Results

Removes all instruments from the scan list

Select All

Selects all the instruments in the scan list.

6 Other items

6.1 Different Locales

If it is required that a host computer in one 'Locale' (E.G. England) is to communicate with an instrument in another locale (E.G. France), then it is not possible to use the default settings for Remote User Name and Remote Password, as these will be the defaults associated with the locale of the host computer.

It is therefore necessary, for each instrument to clear the 'Use Connection Defaults' tick box, and enter the correct Remote User Name and Remote Password (click on 'Edit Remote Password'). See 'Instrument View' for more details.

Security Access

Use Connection Defaults:

Remote User Name:

Georges

Remote Password:

Edit Remote Password

Edit Remote Password

Password:

Confirm Password:

OK

Cancel

6.2 IP Address

For some instruments, the IP address can be obtained dynamically on power up. In such cases, if the instrument is powered off, it is likely that the IP address will be different next time it is powered up. This will result in a comms fail error in Eyris. To recover, the new IP address can be entered in the Eyris Builder instrument view.

The figure below shows part of a typical recorder Network Address configuration page, showing that the IP Address 149.121.131.18 has been obtained using the 'Get from DHCP Server' method.

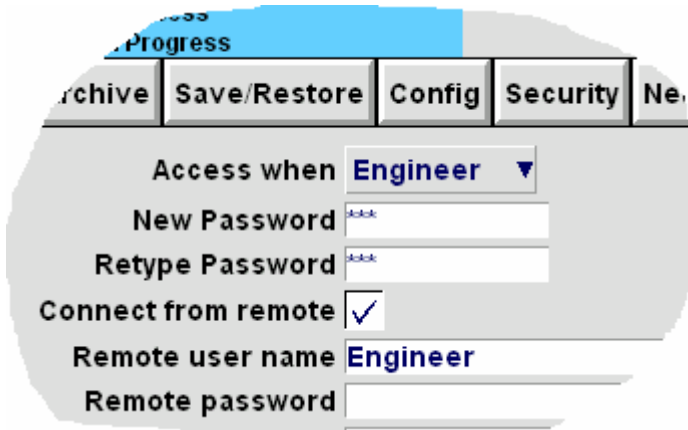
Save/Restore	Config	Security	Network	S
Instrument number	8267			
MAC address	00:0A:8D:00:20:4B			
IP address lookup	Get from DHCP Server ▼			
IP address	149.121.131.18			
Subnet mask	255.255.252.0			
Default gateway	149.121.128.138			
DHCP server enable	<input type="checkbox"/>			
DHCP client enable	<input checked="" type="checkbox"/>			
DHCP server	149.121.128.179			

Alternatively, if Domain Name Service is enabled, the Local host name and Domain can be used instead of the IP address in the form: <Hostname>.<Domain name>. This means that the connection with the instrument will continue even if the IP address changes. The figure below shows part of the Network/Name configuration page. The IT department may need to be contacted in order to establish the DNS host and domain names, server addresses etc.

Save/Restore	Config	Security	Network
Local host	Host-Name		
Domain	Domain.Name		
Domain Name Service	<input checked="" type="checkbox"/>		
Primary DNS Server	149.121.128.81		
Secondary DNS Server	149.121.128.89		

6.3 Remote User Name

Remote user name, Remote password and 'Connect from Remote' are all accessed from the Security/Access area of the relevant instrument's configuration.

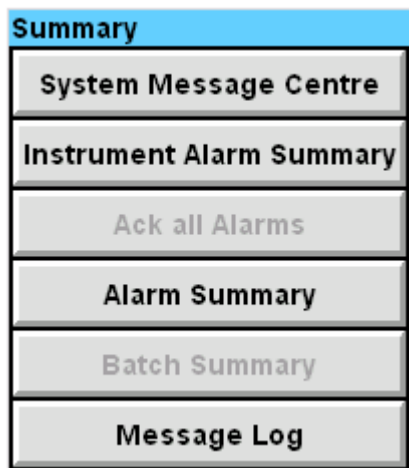
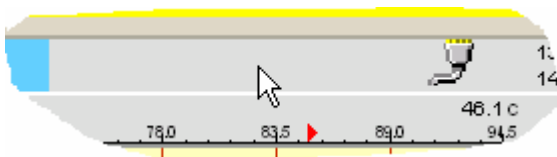


6.4 System message centre

Note:

The System message centre does not appear at the operator interface of the instrument, and is therefore not described in the user guide for the instrument.

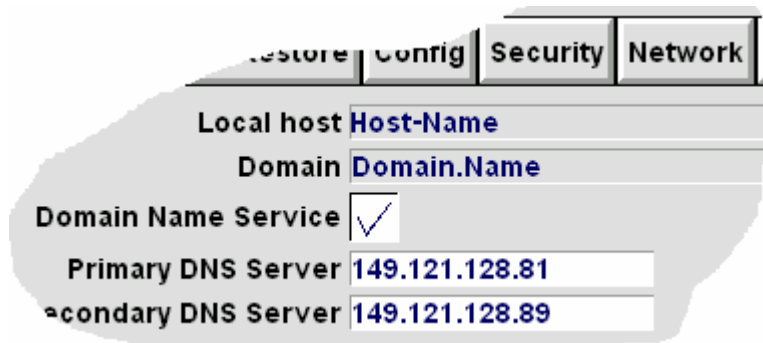
The system message centre is accessed, from a 'Full size view' of the instrument, by clicking on the status bar to the top right of the Bridge view of the instrument, then clicking on 'System message Centre' in the menu which appears.



6.5 Domain Name server

If Domain Name Service is enabled, the Local host name and Domain can be used instead of the IP address in the form: <Hostname>.<Domain name>. This means that the connection with the instrument will continue even if the IP address changes. The figure below shows part of a recorder's Network/Name configuration page.

The IT department may need to be contacted in order to establish the DNS local host and domain names, server addresses etc.



The screenshot shows a configuration page with a navigation bar at the top containing 'Restore', 'Config', 'Security', and 'Network'. Below the navigation bar, the 'Network' section is expanded to show DNS configuration. The 'Local host' field is set to 'Host-Name' and the 'Domain' field is set to 'Domain.Name'. The 'Domain Name Service' checkbox is checked. The 'Primary DNS Server' is set to '149.121.128.81' and the 'Secondary DNS Server' is set to '149.121.128.89'.

Local host	Host-Name
Domain	Domain.Name
Domain Name Service	<input checked="" type="checkbox"/>
Primary DNS Server	149.121.128.81
Secondary DNS Server	149.121.128.89

7 Glossary

Bridge software:

A proprietary software tool for remote viewing and configuration ('Full' version only) of 5000 and 6000 recorders.

Dynamic page:

Dynamic pages can be viewed only from Eyris Browser. When running Eyris browser (i.e. when on-line), panels can be added, removed etc. and their content defined as for fixed pages. When selecting dynamic pages for viewing, fixed pages are identified within the 'Pages...' key drop down menu by the icon above.

Etris Browser:

When Eyris browser is run (by clicking on the 'Run Browser' toolbar icon) an overview page appears, and Eyris attempts to make Bridge connections with all the instruments in the project. The overview page shows a 'thumbnail' for each instrument in the project, giving connection status and (once connected) alarm/battery state etc. Clicking on the 'Pages...' key at the bottom of the screen allows the user to select a page for display. If a Fixed page is chosen, then the instruments selected for display (the panels) cannot be changed, though the instruments can be configured on an individual basis if the user has the relevant access permissions. If a dynamic page is chosen then instruments (panels) can be added and deleted, and the display mode (e.g. horizontal trend) and display group can be selected without the user's having to log in to the instrument.

Eyris Builder:

Eyris Builder allows the user to set up one or more 'projects' where each project contains all the instruments used for a particular control or monitoring application. The display screens (panels) of these instruments are arranged in a number of display pages, which can be defined as fixed or dynamic. Fixed pages are configured (that is, the instrument views which are to appear on each page are set up) as a part of Eyris Builder. Dynamic pages are configured in real time, when running in Eyris Browser. Instruments can be scanned-for and then added to the project, or an instrument's details can be entered manually. Pages can be generated automatically, or defined by the user. Automatically generated pages can subsequently be edited to become 'user-pages'.

Eyris software:

Eyris is a software program which allows any number of suitable instruments to be communicated with using Bridge software. protected network.

Firewall:

Firewall software is intended to protect the computer or network from the external world, by denying access to any user that does not have the correct security credentials. Firewalls can make it difficult or impossible for Eyris to access instruments within a firewall-protected network.

Fixed page:

A fixed page contains a user-defined number of 'panels'. Panels can be added or removed, and the instrument they relate to selected, and the instrument's display mode and group chosen, off-line (i.e. in Eyris builder). During on-line (Browser) operation no editing of fixed pages is possible.

Instrument:

Any piece of equipment, on an Ethernet network, which is recognisable by Eyris as being of a known type (i.e. equipment with which Bridge can attempt to make a connection).

Page:

Pages contain a number of 'panels', each of which represents a bridge session to an instrument. The number of panels on the page is user editable. Pages can be generated automatically, or manually. When generated automatically, Eyris produces one (empty) dynamic page and sufficient fixed pages to contain one panel for each instrument in the project, at four panels per page. When generated manually, pages are produced one at a time. The user decides whether to produce a fixed or a dynamic page, and if fixed, how many panels per page (one to nine) and 'tiled', 'horizontal' or 'vertical' as the layout. All these items may be edited subsequent to generation. Pages are viewed in real time by clicking on the 'Run Browser' toolbar icon, and (once connection with the instruments has been established), selecting the desired page using the 'Pages...' key at the bottom of the Screen.

Panels: A panel is an area on the display page which contains a Bridge view of a recorder. Up to nine panels can be accommodated on one display page.

Project: Project is the name given to an Eyris configuration containing display pages and instruments. When Eyris is opened, it opens the previously-used project.

Review software:

This proprietary program allows data to be imported from one or more instruments into a database. Data is then accessed from this database, for display on a 'chart' on the computer screen. This allows process values etc. from many instruments to be displayed on a single chart. Full date and time (go to) search facilities are included, as are the ability for the user to annotate the chart, the ability to select data on a batch start/stop basis, the ability to print charts and so on.

7 GLOSSARY (Cont.)

Security manager:

Security Manager is a software program that provides a central environment within which user accounts can be set up and regular account management carried out. It provides update functionality to user accounts, logins, password changes, etc., and has the ability to distribute the security database to any Security item nodes, including itself, in the security configuration. Security features such as secure electronic signatures, and 'Audit Trail' trace-ability are included. Although Eyris does not interface directly with Security Manager, both Review software and the Recorder operation do, if the option is enabled in the recorder.

This page is deliberately left blank

Index

About.....	32	Delete.....	10, 36
About Eyris Builder.....	37	Deleting an instrument	39
Actions menu	36	Disk symbol.....	31
Active alarms acknowledged.....	29	Display context menu.....	38
Active alarms Unacknowledged	29	Domain.....	43
ADD	15	Domain name.....	41
Add a shortcut to the browser	17	Domain Name server	43
Add instruments	9, 36, 38, 39	Domain Name Service	10, 24, 41
Add Pages.....	36, 38	Dynamic Help.....	37
Add to Project.....	10, 39	Dynamic page	1
Add to Project All.....	39	Dynamic pages.....	22
Add.....	10	Edit menu	36
Alarm Status indication	29, 31	Edit.....	10
Auto-generate pages.....	21	Editing instrument names.....	14, 24
Autogeneration.....	21	Editing page names.....	22
Battery symbol	31	Envelope symbol.....	31
Blue page icon	21	Exit	37
Bridge.....	1	Eyris browser.....	1
Builder	26	Eyris Builder	1
Builder key	32	Eyris software.....	1
'Busy	29	File menu	37
Cancel.....	10	Finish.....	17
Centre Pane	20	Firewall.....	1, 4
Changing Pane width.....	20	Fixed Pages	1, 19, 22
Clear results.....	39	FTP symbol	31
Comms fail error.....	41	Full Page	31, 34
Config.....	32	Get from DHCP Server.....	41
Connect from Remote	42	Getting started.....	8
Connection Defaults.....	14	Glossary of terms	1
Connection icon	29	Groups & Views.....	24
Connector symbol	31	Hand symbol	1
Contents.....	37	Help.....	32, 35
Copy.....	35, 36, 38	Help menu.....	37
Copy.....	10	Help Pane	20
Create your own project	8	Home.....	26, 32
Customise Ranges.....	10	Home Page	21
Cut	35, 36, 38	Horizontal	15, 26, 32
Deep Scan	10, 42	Host name.....	14

Hostname	41	Phase 2	42
Index.....	37	Phase 3	42
Instrument	1, 9	Previous projects list.....	37
Instrument context menu	39	Processor speed.....	4
Instrument name	14	Project	1
Instrument view	24	Project context menu.....	38
Instruments view	23	Project Name.....	9
Invalid format for IP value.....	10	Project shortcut.....	9
invalid IP range.....	10	Quick scan.....	42
IP Address.....	14, 24, 41	RAM requirements.....	4
IP address	10	Re-Generate Browser Files	36
Keep Blocking	4	Remote password.....	24, 42
Keys	26, 29, 32	Remote User Name.....	24, 42
Layout.....	15, 26, 32	Removing instruments.....	39
Local host name	43	Rename	38
Login.....	26, 32	Return to full page	31, 34
maximum number of bridge sessions.....	26	Review software	1
Medium scan	42	Run Browser.....	26, 35, 36
MORE.....	15	Run Review	36
Name.....	24	Scan for instruments online	9
New project	9, 35, 37	Scan list context menu	39
No active alarms.....	29	Scan Phases	42
Number of panels	15	Screen resolution.....	4
Offline.....	29	Search	37
Open an existing project.....	8	Security Access	24
Open Project	35, 37	Security Alerts	4
Overview page	29	Security Manager	1
Page	1	Security messages	4
Page Title	15	Select All.....	39
Page Type.....	15	Settings	10
Page View	22	Settings.....	42
Pages	32	Shortcut for project	9
Pages context menu.....	38	Show editor buttons.....	34
Pages.....	26	Show full size panel.....	34
Panel	1	Show full size panel icon	29
Panels Per Page	21	Slow scan	42
Password.....	24	Specify instrument details.....	9
Paste	35, 36, 38, 39	Specify instrument details yourself	14
Pending.....	42	Specify Range Properties	10
Phase 1	42	Specify your own runtime pages.....	15

Start Scan	42	Use Connection Defaults.....	14
Status bar	31	Use Defaults.....	24
Supported Operating systems.....	4	User Name	24
System message centre.....	42	Vertical	15, 26, 32
thumbnail.....	29	Windows 2003.....	4
Thumbnails.....	31	Windows Firewall	4
Tiled	15, 26, 32	Windows Security Alerts.....	4
Title bar	29	Windows XP	4
Toolbar icons.....	35	Would you like to show the runtime displays?	26
Tree View	20	Would you like to show.....	17

This page is deliberately left blank

Inter-Company sales and service locations

AUSTRALIA Sydney

Eurotherm Pty. Ltd.
Telephone (+61 2) 9838 0099
Fax (+61 2) 9838 9288
E-mail info.au@eurotherm.com

AUSTRIA Vienna

Eurotherm GmbH
Telephone (+43 1) 7987601
Fax (+43 1) 7987605
E-mail info.at@eurotherm.com

BELGIUM & LUXEMBURG Moha

Eurotherm S.A./N.V.
Telephone (+32) 85 274080
Fax (+32) 85 274081
E-mail info.be@eurotherm.com

BRAZIL Campinas-SP

Eurotherm Ltda.
Telephone (+5519) 3707 5333
Fax (+5519) 3707 5345
E-mail info.br@eurotherm.com

DENMARK Copenhagen

Eurotherm Danmark AS
Telephone (+45 70) 234670
Fax (+45 70) 234660
E-mail info.dk@eurotherm.com

FINLAND Abo

Eurotherm Finland
Telephone (+358) 22506030
Fax (+358) 22503201
E-mail info.fi@eurotherm.com

FRANCE Lyon

Eurotherm Automation SA
Telephone (+33 478) 664500
Fax (+33 478) 352490
E-mail info.fr@eurotherm.com

GERMANY Limburg

Eurotherm Deutschland GmbH
Telephone (+49 6431) 2980
Fax (+49 6431) 298119
E-mail info.de@eurotherm.com

HONG KONG & CHINA

Eurotherm Limited North Point
Telephone (+85 2) 28733826
Fax (+85 2) 28700148
E-mail info.hk@eurotherm.com

Guangzhou Office

Telephone (+86 20) 8755 5099
Fax (+86 20) 8755 5831
E-mail info.cn@eurotherm.com

Beijing Office

Telephone (+86 10) 6567 8506
Fax (+86 10) 6567 8509
E-mail info.cn@eurotherm.com

Shanghai Office

Telephone (+86 21) 6145 1188
Fax (+86 21) 6145 1187
E-mail info.cn@eurotherm.com

INDIA Chennai

Eurotherm India Limited
Telephone (+9144) 2496 1129
Fax (+9144) 2496 1831
E-mail info.in@eurotherm.com

IRELAND Dublin

Eurotherm Ireland Limited
Telephone (+353 1) 4691800
Fax (+353 1) 4691300
E-mail info.ie@eurotherm.com

ITALY Como

Eurotherm S.r.l.
Telephone (+39 31) 975111
Fax (+39 31) 977512
E-mail info.it@eurotherm.com

KOREA Seoul

Eurotherm Korea Limited
Telephone (+82 31) 2738507
Fax (+82 31) 2738508
E-mail info.kr@eurotherm.com

NETHERLANDS Alphen a/d Rijn

Eurotherm B.V.
Telephone (+31 172) 411752
Fax (+31 172) 417260
E-mail info.nl@eurotherm.com

NORWAY Oslo

Eurotherm A/S
Telephone (+47 67) 592170
Fax (+47 67) 118301
E-mail info.no@eurotherm.com

POLAND Katowice

Invensys Eurotherm Sp z o.o
Telephone (+48 32) 218 5100
Fax (+48 32) 217 7171
E-mail info.pl@eurotherm.com

SPAIN Madrid

Eurotherm España SA
Telephone (+34 91) 661 6001
Fax (+34 91) 661 9093
E-mail info.es@eurotherm.com

SWEDEN Malmo

Eurotherm AB
Telephone (+46 40) 384500
Fax (+46 40) 384545
E-mail info.se@eurotherm.com

SWITZERLAND Wollerau

Eurotherm Produkte (Schweiz) AG
Telephone (+41 44) 787 1040
Fax (+41 44) 787 1044
E-mail info.ch@eurotherm.com

UNITED KINGDOM Worthing

Eurotherm Limited
Telephone (+44 1903) 268500
Fax (+44 1903) 265982
E-mail info.uk@eurotherm.com
Web www.eurotherm.co.uk

U.S.A Leesburg VA

Eurotherm Inc.
Telephone (+1 703) 443 0000
Fax (+1 703) 669 1300
E-mail info.us@eurotherm.com
Web www.eurotherm.com

ED52



Invensys
EUROTHERM

EUROTHERM LIMITED

Faraday Close, Durrington, Worthing, West Sussex, BN13 3PL
Telephone: +44 (0)1903 268500 Facsimile: +44 (0)1903 265982
e-mail: info.uk@eurotherm.com
Website: <http://www.eurotherm.co.uk>

