

Product Configuration
Simplified

Eurotherm®

iTools

A comprehensive suite of software tools with feature-specific editors that allow users to quickly configure, commission, monitor and maintain Eurotherm products.

eurotherm.com/itools

 **WATLOW®**
Powered by Possibility

iTools Overview

iTools Features

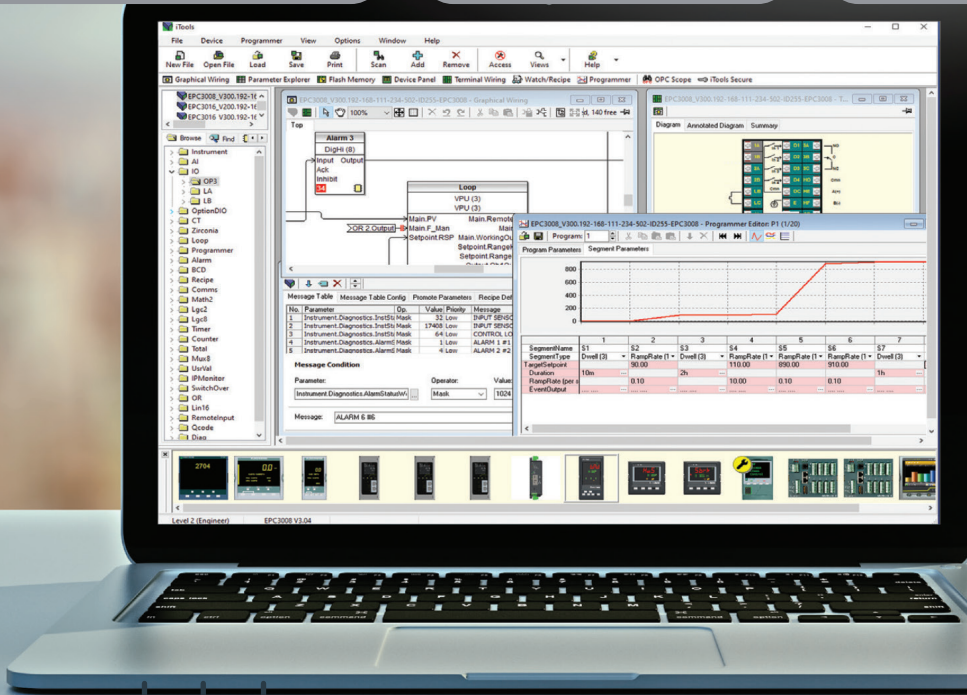
- Terminal Wiring Editor
- Parameter Explorer
- Graphical Wiring Editor
- Programmer Editor
- and more...

Additional Features

- OPC Scope
- Basic SCADA
- Standalone Programmer Editor

OPC DA2 Connectivity

- Eurotherm PAC
- System platform technologies
- LabVIEW™
- and more...



USB CPI CLIP

Modbus RTU Serial

MODBUS TCP via Ethernet



iTools free download eurotherm.com/itools

To purchase optional features contact us www.eurotherm.com/us

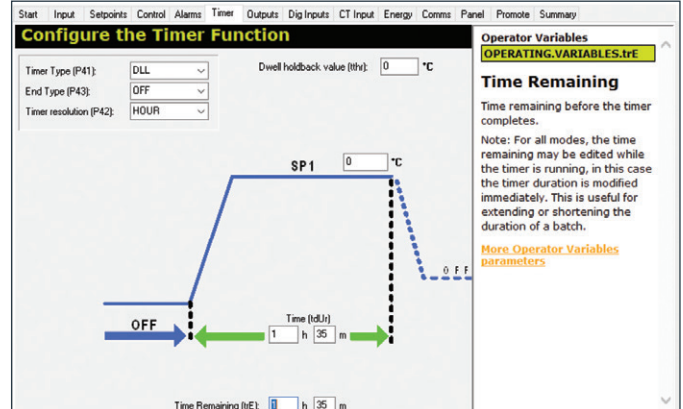
iTools Features

Wizards

- Guided configuration of Eurotherm products
- Step-by-step sequence of pages

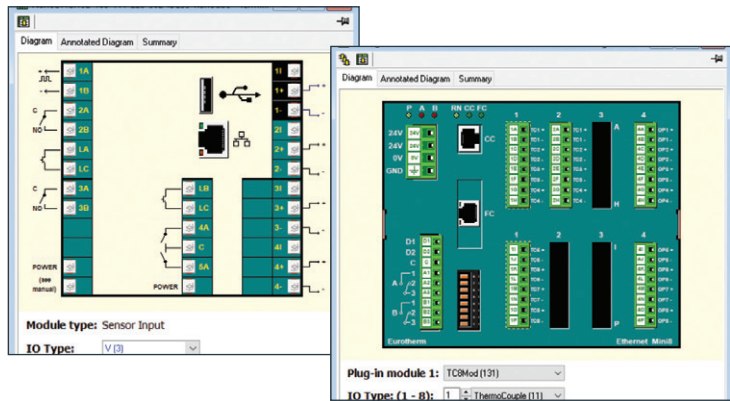


- Interactive help
- Graphical illustration of configuration settings



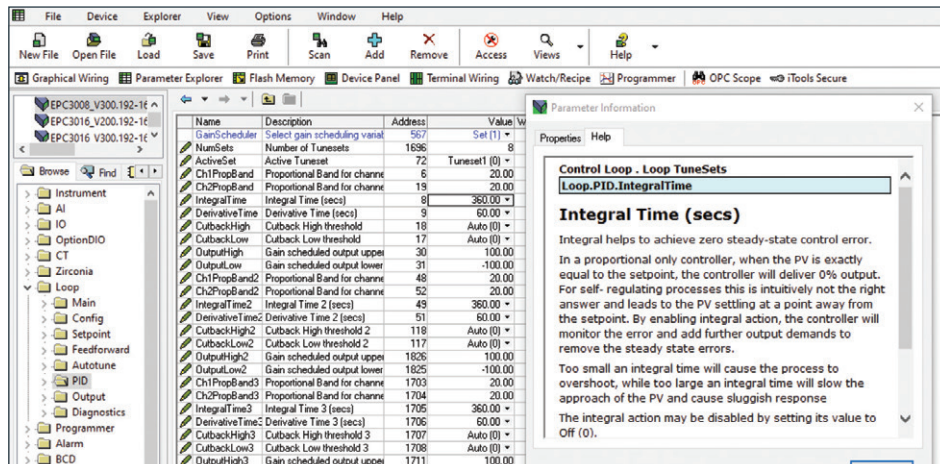
Terminal Wiring Editor

- Representation of the I/O module terminal configuration
- Online view shows the actual I/O configuration of a device
- Offline view enables configuration of required I/O



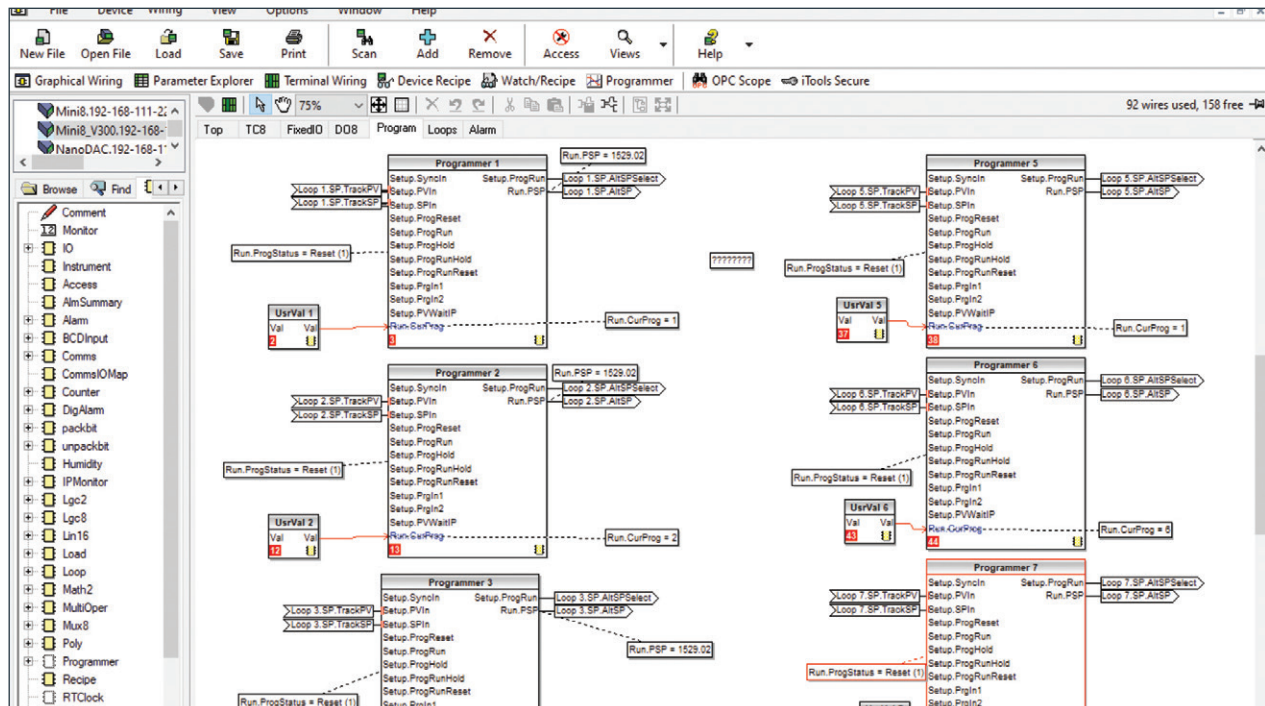
Function Block Parameter Explorer

- Browse library of function blocks
- Function blocks include I/O, PID, communications, maths etc.
- View and modify parameters in Parameter List View
- Parameter Help



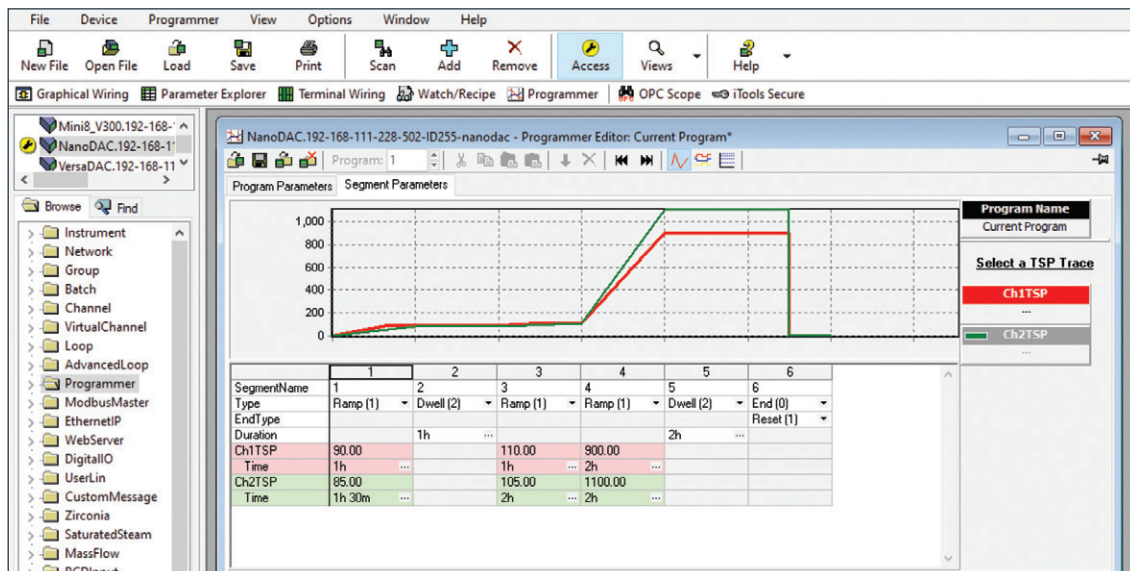
Graphical Wiring Editor

- Build on preconfigured function blocks
- Develop advanced control applications in minutes
- Simple drag-and-drop graphical interface



Programmer Editor

- Set up setpoint profiles
- Configure programmable event outputs
- Edit programs offline on a local PC, or an online device
- Download stored programs to device
- Store programs on local PC or device
- Stand-Alone Programmer Editor available for use by operators



User Messages

- Define user messages
- Assign messages to parameter values

Device Recipes

- User defined list of parameters
- Create 'Data Sets' of parameter values to be downloaded and stored on the device

Promote Parameters

- Identify priority parameters
- 'User List' displayed on the device front panel

No.	Parameter	Description	Level	Access	Name
1	Loop.Main.WorkingOutput	Working Output (%)	Level 1 + 2	Read Only	W.OUT
2	Loop.Main.RemoteLoc	Remote or Local Setpoint	Level 1 + 2	Read/Write	R-L
3	Loop.Setpoint.SPHighLimit	SP1/SP2 upper limit	Level 2	Read/Write	SP.HI
4	Loop.Setpoint.SPLowLimit	SP1/SP2 lower limit	Level 2	Read/Write	SP.LO
5	Loop.Setpoint.SP1	Setpoint 1	Level 1 + 2	Read/Write	SP1
6	Loop.Setpoint.SP2	Setpoint 2	Level 1 + 2	Read/Write	SP2
7	Loop.Setpoint.SPRateUp	Setpoint up rate limit	Level 2	Read/Write	SP.UP
8	Loop.Setpoint.SPRateDown	Setpoint down rate limit	Level 2	Read/Write	SP.DWN
9	AI.1.PV	PV	Level 1 + 2	Read Only	AI1.PV
10	AI.2.PV	PV	Level 1 + 2	Read Only	AI2.PV
11	Loop.Autotune.AutotuneEnabl	Start an autotune	Level 2	Read/Write	TUNE
12	Loop.PID.Ch1PropBand	Proportional Band for channel	Level 2	Read/Write	PB.H
13	Loop.PID.Ch2PropBand	Proportional Band for channel	Level 2	Read/Write	PB.C
14	Loop.PID.IntegralTime	Integral Time (secs)	Level 2	Read/Write	TI
15	Loop.PID.DerivativeTime	Derivative Time (secs)	Level 2	Read/Write	TD

Fieldbus IO Gateway Editor

- Define 'Input' and 'Output' parameters to be available over Fieldbus link (e.g. EtherNet/IP, PROFINET)

Input Definition	Output Definition
Input01	Faultdet.AnyAlarm
Input02	Control.Main.PV
Input03	Control.Main.SP
Input04	Network.Meas.I
Input05	Network.Meas.V
Input06	Faultdet.AlarmStatus1
Input07	Faultdet.AlarmStatus2
Input08	(not wired)
Input09	(not wired)
Input10	(not wired)
Input11	(not wired)
Input12	(not wired)
Input13	(not wired)
Input14	(not wired)
Input15	(not wired)
Input16	(not wired)
Input17	(not wired)

Device Panel

- Display a live interactive view of the device front panel



Watch/Recipe Editor

- Monitor watch list of live parameter values
- Recipe definitions are stored in files on the PC and managed within iTools

3500.192-168-111-222-502-ID001-3504 - Watch/Recipe Editor

List	Parameter	Description	Value	Set 1	Set 2	Set 3
Loop.1.Main	PV	Process Variable	122.73	40.75	15.00	31.18
Loop.1.Main	WorkingSP	Working Setpoint	122.91	63.08	15.00	53.19
Loop.1.Main	ActiveOut	Working Output	20.0	15.9	2.0	15.6
Loop.1.PID	ProportionalBan	Proportional Band	89.4	89.4	89.4	89.4
Loop.1.PID	IntegralTime	Integral Time	54	54	54	54
Loop.1.PID	DerivativeTime	Derivative Time	9	9	9	9
Loop.2.Main	PV	Process Variable	121.79	45.15	15.00	36.38
Loop.2.Main	WorkingSP	Working Setpoint	121.81	61.34	15.00	51.88
Loop.2.PID	ProportionalBan	Proportional Band	110.7	110.7	110.7	110.7
Loop.2.PID	IntegralTime	Integral Time	45	45	45	45
Loop.2.PID	DerivativeTime	Derivative Time	7	7	7	7

User Pages

- Set up custom controller display
- Scrollable list of parameter values
- Display styles include bar graph, numeric and custom messages

The screenshot shows the 'User Page Editor' window for device 3508.192-168-111-224-502-ID001-3508. The main display shows a Eurotherm screen with 'Oven 1' and 'Power 34.0'. The 'Promote Parameter List' table is as follows:

Style	List	Parameter	User Text
(text only)	IO.PV	PV	Oven 1
Graph Low	Loop.1.SP	SP1	Target
Graph High	Loop.1.OP	Ch1Out	Power

Selected User Page: Level 1
 Selected Promote Parameter: Item Nr: 3, Style: Single Row, Access: Lev 1 Alterable

Cloning

- Configurations defined using iTools can be saved to file on a local PC
- Saved configurations can be reloaded into a compatible device

Optional Additional iTools Components

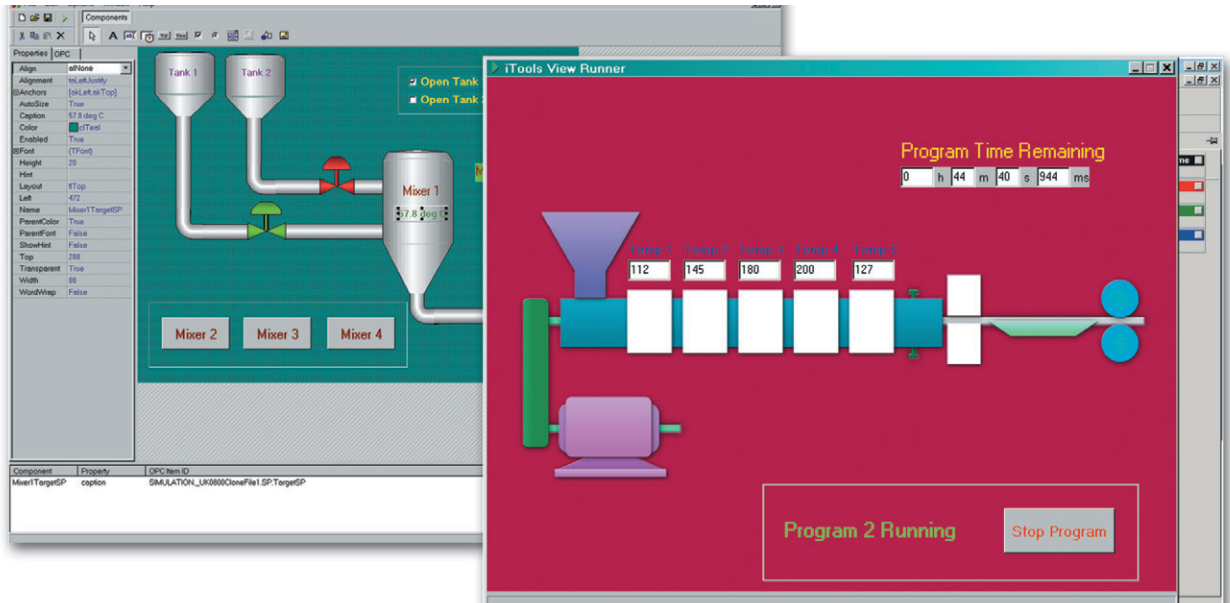
OPC Scope

- An OPC explorer program that can connect to any OPC DA2 server
- Process monitoring
- Trending
- Data logging
- Watch Recipes
- View live data, with a scalable time axis between 1 minute and 1 month
- Historical review mode
- Data can be written onto the PC hard disk in CSV format and can be analyzed e.g., in an Excel Spreadsheet



View Builder / View Runner

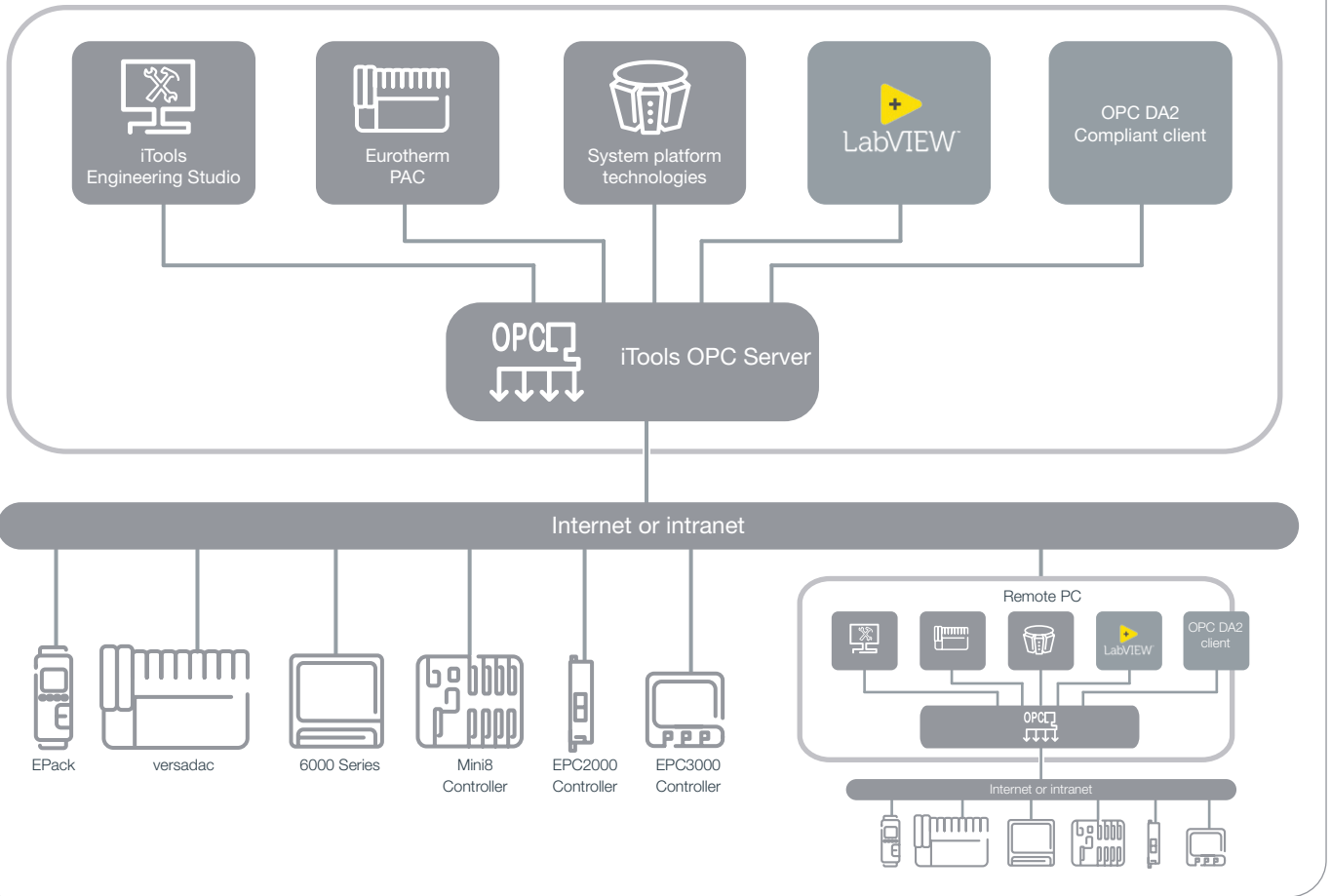
- Basic SCADA
- Create custom screens
- Import background images
- User buttons to navigate between screens
- Live data monitoring
- Custom user interface to support process commissioning, diagnostics, monitoring and operation



The screenshot shows two overlapping windows from the iTools software. The left window is the 'View Builder' interface, displaying a process flow diagram with two tanks (Tank 1 and Tank 2) connected to a mixer (Mixer 1). Below the diagram are buttons for 'Mixer 2', 'Mixer 3', and 'Mixer 4'. A properties panel on the left lists various attributes for the selected component. The right window is the 'iTools View Runner' interface, showing a red background with a 'Program Time Remaining' timer at 0 h 44 m 40 s 944 ms. Below the timer is a diagram of a process with five tanks (Tank 1 to Tank 5) and a mixer. At the bottom, there are buttons for 'Program 2 Running' and 'Stop Program'.

OPC Server

- OPC DA2 Server
 - Compatible with any OPC DA2 client:
 - Eurotherm PAC
 - System platform technologies
 - LabVIEW
- Supports
 - Modbus TCP over Ethernet
 - Modbus RTU Serial
- Modbus TCP to Modbus Serial gateway
 - Remote PC access via Internet/intranet to iTools OPC Server
- Automatic network scanning and device detection
- Can integrate any Modbus RTU/TCP communicating device
- Includes advanced communication diagnostic and monitoring tools



Eurotherm US LLC

44621 Guilford Drive, Suite 100
 20147 Ashburn, VA
 USA
 Phone: +1-703-724-7300

www.eurotherm.com

Contact your
 local sales
 representative



Document Number HA026177USA Issue 7

Watlow, Eurotherm, EurothermSuite, EFit, EPack, EPower, Eycon, Chessell, Mini8, nanodac, piccolo and versadac are trademarks and property of Watlow its subsidiaries and affiliated companies. All other trademarks are the property of their respective owners.

©Watlow Electric Manufacturing Company. All rights reserved.

